

Recombinant Human ANP32B protein, GST-tagged

Cat. No. ANP32B-618H Lot. No. (See product label)

SPECIFICATION

Product Overview	Human ANP32B full-length ORF (NP_006392.1, 1 a.a. - 251 a.a.) recombinant protein with GST-tag at N-terminal.
Species	Human
Source	Wheat Germ
Description	ANP32B (Acidic Nuclear Phosphoprotein 32 Family Member B) is a Protein Coding gene. GO annotations related to this gene include histone binding and RNA polymerase binding. An important paralog of this gene is ANP32A.
Molecular Mass	55.2 kDa
AA Sequence	MDMKRRIHLELRNRTPAAVRELVLNCKSNKGKIEGLTAEFVNLEFLSLINVGLISVS NLPKLPKLLKLELSENRIFGGLDMLAEKLPNLTHLNLSGNKLKDISTLEPLKKLECLKS LDFNCEVTNLNDYRESVFKLLPQLTYLDGYDREDQEAPDSDAEVDGVDEEEDEE GEDEDEDEDEGEDEEEDDEDEDEDEVEGDEDDDEVSEEEEFGLDEDEDEDEDE EEEEEGGKGEKRRKRETDDEGEDD
Applications	Enzyme-linked Immunoabsorbent Assay; Western Blot (Recombinant protein); Antibody Production; Protein Array
Notes	Best use within three months from the date of receipt of this protein.
Storage	Store at -80 centigrade. Aliquot to avoid repeated freezing and thawing.

 Tel: 1-631-559-9269 1-516-512-3133

 Email: info@creative-biomart.com  Fax: 1-631-938-8127

 45-1 Ramsey Road, Shirley, NY 11967, USA

Storage Buffer 50 mM Tris-HCl, 10 mM reduced Glutathione, pH=8.0 in the elution buffer.

GENE INFORMATION

Gene Name ANP32B acidic (leucine-rich) nuclear phosphoprotein 32 family, member B [Homo sapiens]

Official Symbol ANP32B

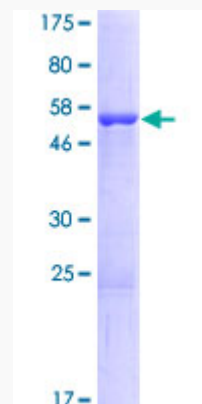
Synonyms ANP32B; acidic (leucine-rich) nuclear phosphoprotein 32 family, member B; acidic leucine-rich nuclear phosphoprotein 32 family member B; acidic protein rich in leucines; APRIL; PHAPI2; SSP29; silver-stainable protein SSP29; putative HLA-DR-associated protein I-2;

Gene ID 10541

mRNA Refseq NM_006401

Protein Refseq NP_006392

UniProt ID Q92688



 Tel: 1-631-559-9269 1-516-512-3133

 Email: info@creative-biomart.com  Fax: 1-631-938-8127

 45-1 Ramsey Road, Shirley, NY 11967, USA



12.5% SDS-PAGE Stained with Coomassie Blue.

 Tel: 1-631-559-9269 1-516-512-3133

 Email: info@creative-biomart.com  Fax: 1-631-938-8127

 45-1 Ramsey Road, Shirley, NY 11967, USA