

## Recombinant Human ANP32E protein, GST-tagged

Cat. No. ANP32E-620H Lot. No. (See product label)

### SPECIFICATION

<b>Product Overview</b>	Human ANP32E full-length ORF ( NP_112182.1, 1 a.a. - 268 a.a.) recombinant protein with GST-tag at N-terminal.
<b>Species</b>	Human
<b>Source</b>	Wheat Germ
<b>Description</b>	ANP32E (Acidic Nuclear Phosphoprotein 32 Family Member E) is a Protein Coding gene. GO annotations related to this gene include histone binding and phosphatase inhibitor activity. An important paralog of this gene is ANP32A.
<b>Molecular Mass</b>	57.1 kDa
<b>AA Sequence</b>	MEMKKKINLELRNRSPEEVTELVLDNCLCVNGEIEGLNDTFKELEFLSMANVELSSLA RLPSLNKLRKLELSDNIISSGGLEVLAEKCPNLTYLNLSGNKIKDLSTVEALQNLKLNKS LDFNCEITNLEDYRESIFELLQQITYLDGFDQEDNEAPDSEEEDEDEDGDEDEDEEEE ENEAGPPEGYEEEEEEEEEEDEDEDEDEDEDEAGSELGEGEEVGLSYLMKEEIQDEE DDDDYVEEGEEEEEEEEEGGLRGEKRKRDAEDDGEEEDD
<b>Applications</b>	Enzyme-linked Immunoabsorbent Assay; Western Blot (Recombinant protein); Antibody Production; Protein Array
<b>Notes</b>	Best use within three months from the date of receipt of this protein.
<b>Storage</b>	Store at -80 centigrade. Aliquot to avoid repeated freezing and thawing.

 Tel: 1-631-559-9269 1-516-512-3133

 Email: [info@creative-biomart.com](mailto:info@creative-biomart.com)  Fax: 1-631-938-8127

 45-1 Ramsey Road, Shirley, NY 11967, USA

**Storage Buffer** 50 mM Tris-HCl, 10 mM reduced Glutathione, pH=8.0 in the elution buffer.

## GENE INFORMATION

**Gene Name** ANP32E acidic (leucine-rich) nuclear phosphoprotein 32 family, member E [ Homo sapiens ]

**Official Symbol** ANP32E

**Synonyms** ANP32E; acidic (leucine-rich) nuclear phosphoprotein 32 family, member E; acidic leucine-rich nuclear phosphoprotein 32 family member E; LANP L; LANPL; MGC5350; LANP-like protein; leucine-rich acidic nuclear protein like; LANP-L;

**Gene ID** 81611

**mRNA Refseq** NM\_001136478

**Protein Refseq** NP\_001129950

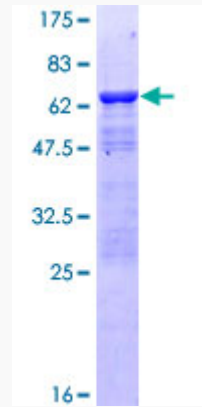
**MIM** 609611

**UniProt ID** Q9BTT0

 Tel: 1-631-559-9269 1-516-512-3133

 Email: [info@creative-biomart.com](mailto:info@creative-biomart.com)  Fax: 1-631-938-8127

 45-1 Ramsey Road, Shirley, NY 11967, USA



12.5% SDS-PAGE Stained with Coomassie Blue.

 Tel: 1-631-559-9269 1-516-512-3133

 Email: [info@creative-biomart.com](mailto:info@creative-biomart.com)  Fax: 1-631-938-8127

 45-1 Ramsey Road, Shirley, NY 11967, USA