

## Recombinant Human ANPEP Protein, C-His-tagged

Cat. No. ANPEP-053H Lot. No. (See product label)

### SPECIFICATION

<b>Product Overview</b>	Recombinant Human ANPEP Protein with C-His tag was expressed in E. coli.
<b>Species</b>	Human
<b>Source</b>	E.coli
<b>Description</b>	<p>Aminopeptidase N (APN, CD13) is a widely expressed, membrane-bound proteolytic enzyme that breaks down peptides during digestion, cleaves cell surface antigens during antigen presentation, and acts as a receptor for human viruses, including several coronaviruses. This multifunctional protein is implicated in the regulation of many biological processes, including angiogenesis, cell proliferation, cell migration, inflammation and immune response. APN was originally identified as the cell surface antigen CD13, which is expressed in myeloid lineage hematopoietic cells and myeloid leukemia. Identified substrates of aminopeptidase N include the angiotensin I-III peptide hormones, the opioid peptide met-enkephalin, and cytokines MCP-1 and MIP-1. Abnormal APN protein expression is seen in various forms of cancer, with high APN expression associated with poor survival in colon cancer and non-small cell lung cancer and silenced APN expression related to poor prognosis in prostate cancer.</p>
<b>Molecular Mass</b>	~40 kDa
<b>AA Sequence</b>	<p>NDLFSTSGNEWVLLNLTGYYRVNYDEENWRKIQTQLQRDHSVIPINRAQIINDA            FNLASAHKVPVTLALNNTLFLIEERQYMPWEAALSSLSYFKLMFDRSEVYGPMKNYL            KKQVTPLFIHFRNNTNNWREIPENLMDQYSEVNAISTACSNVPECEEMVSGLFKQ</p>

 Tel: 1-631-559-9269 1-516-512-3133

 Email: [info@creative-biomart.com](mailto:info@creative-biomart.com)  Fax: 1-631-938-8127

 45-1 Ramsey Road, Shirley, NY 11967, USA



WMENPNNNPIHPNLRSTVYCNAIAQGGEEWDFAWEQFRNATLVNEADKLRAALA  
 CSKELWILNRYLSYTLNPD LIRKQDATSTIISITNNVIGQLVWDFVQSNWKKLFNDY  
 GGGSF SFSNLIQAVTRRFSTEYELQQLEQFKKDNEETGFGSGTRALEQALEKTKANI  
 KWVKENKEVVLQWFTENSK

<b>Purity</b>	Transferred into competent cells and the supernatant was purified by NI column affinity chromatography and the purity is > 85% (by SDS-PAGE).
<b>Notes</b>	For research use only, not for use in diagnostic procedure.
<b>Storage</b>	Store at 4 centigrade short term. Aliquot and store at -22 centigrade long term. Avoid freeze-thaw cycles.
<b>Concentration</b>	≥0.5 mg/mL
<b>Storage Buffer</b>	PBS, 4M Urea, pH7.4

## GENE INFORMATION

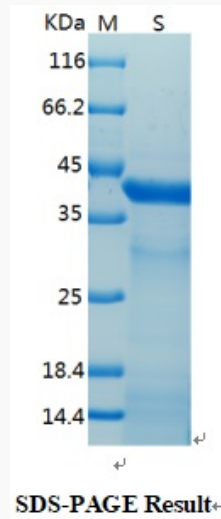
<b>Gene Name</b>	ANPEP alanyl (membrane) aminopeptidase [ Homo sapiens (human) ]
<b>Official Symbol</b>	ANPEP
<b>Synonyms</b>	ANPEP; alanyl (membrane) aminopeptidase; CD13, PEPN; aminopeptidase N; aminopeptidase M; gp150; LAP1; microsomal aminopeptidase; p150; AP-M; AP-N; hAPN; alanyl aminopeptidase; myeloid plasma membrane glycoprotein CD13; APN; CD13; P150; PEPN; GP150;
<b>Gene ID</b>	290
<b>mRNA Refseq</b>	NM_001150

**Protein Refseq** NP\_001141

**MIM** 151530

**UniProt ID** P15144

**SDS-PAGE**



 Tel: 1-631-559-9269 1-516-512-3133

 Email: [info@creative-biomart.com](mailto:info@creative-biomart.com)  Fax: 1-631-938-8127

 45-1 Ramsey Road, Shirley, NY 11967, USA