

Recombinant Human ANPEP protein, His-GST & Myc-tagged

Cat. No. ANPEP-1417H Lot. No. (See product label)

SPECIFICATION

Product Overview	Recombinant Human ANPEP protein(P15144)(34-219aa), fused to N-terminal His-GST tag and C-terminal Myc tag, was expressed in E. coli.
Species	Human
Source	E.coli
ProteinLength	34-219aa
Form	If the delivery form is liquid, the default storage buffer is Tris/PBS-based buffer, 5%-50% glycerol. If the delivery form is lyophilized powder, the buffer before lyophilization is Tris/PBS-based buffer, 6% Trehalose, pH 8.0.
Molecular Mass	55.8 kDa
Purity	Greater than 85% as determined by SDS-PAGE.
Storage	Store at -20°C/-80°C upon receipt, aliquoting is necessary for mutiple use. Avoid repeated freeze-thaw cycles.
Reconstitution	It is recommended that sterile water be added to the vial to prepare a stock solution of 0.2 ug/ul. Centrifuge the vial at 4°C before opening to recover the entire contents.

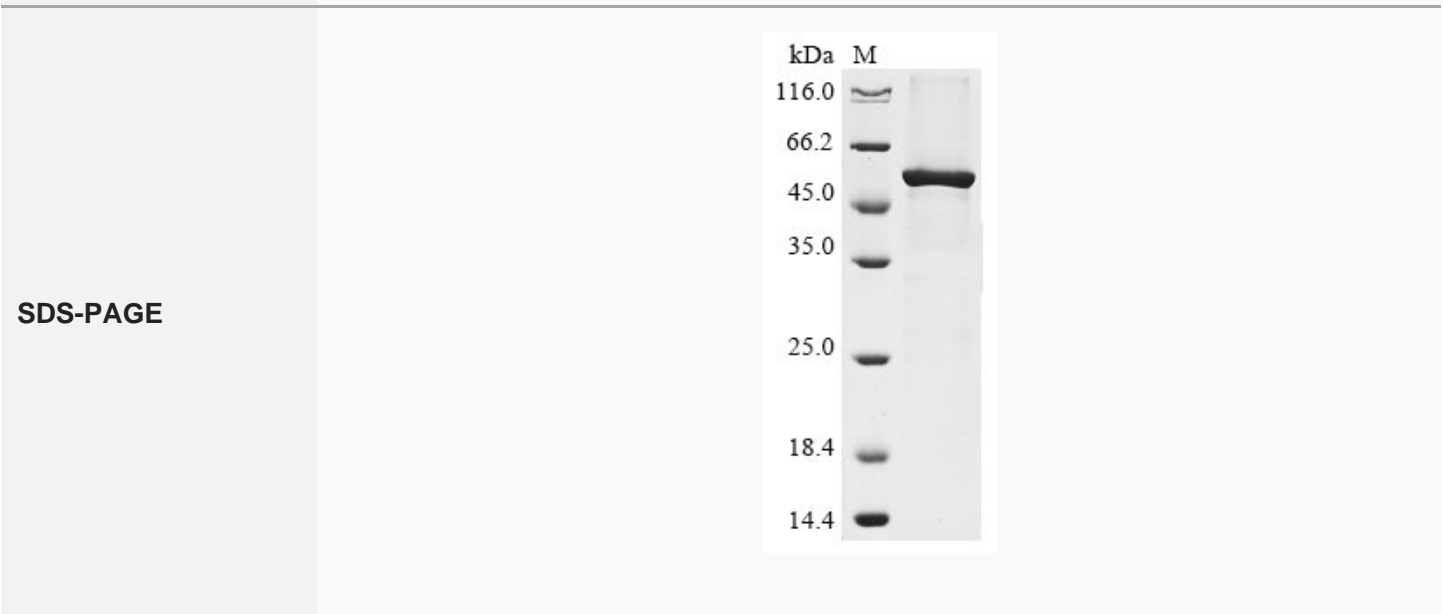
GENE INFORMATION

 Tel: 1-631-559-9269 1-516-512-3133

 Email: info@creative-biomart.com  Fax: 1-631-938-8127

 45-1 Ramsey Road, Shirley, NY 11967, USA

Gene Name	ANPEP alanyl (membrane) aminopeptidase [Homo sapiens]
Official Symbol	ANPEP
Synonyms	ANPEP; alanyl (membrane) aminopeptidase; CD13, PEPN; aminopeptidase N; aminopeptidase M; gp150; LAP1; microsomal aminopeptidase; p150; AP-M; AP-N; hAPN; alanyl aminopeptidase; myeloid plasma membrane glycoprotein CD13; APN; CD13; P150; PEPN; GP150;
Gene ID	290
mRNA Refseq	NM_001150
Protein Refseq	NP_001141
MIM	151530
UniProt ID	P15144



Tel: 1-631-559-9269 1-516-512-3133

Email: info@creative-biomart.com Fax: 1-631-938-8127

45-1 Ramsey Road, Shirley, NY 11967, USA