

## Recombinant Human ANPEP protein, His & T7-tagged

Cat. No. ANPEP-1454H Lot. No. (See product label)

### SPECIFICATION

**Product Overview** Recombinant Human ANPEP aa. (Asn581~Asn738 (Accession # P15144)) fused with N-terminal His & T7 tag was produced in E. coli cells.

**Species** Human

**Source** E.coli

**ProteinLength** Asn581~Asn738

#### Description

Aminopeptidase N is located in the small-intestinal and renal microvillar membrane, and also in other plasma membranes. In the small intestine aminopeptidase N plays a role in the final digestion of peptides generated from hydrolysis of proteins by gastric and pancreatic proteases. Its function in proximal tubular epithelial cells and other cell types is less clear. The large extracellular carboxyterminal domain contains a pentapeptide consensus sequence characteristic of members of the zinc-binding metalloproteinase superfamily. Sequence comparisons with known enzymes of this class showed that CD13 and aminopeptidase N are identical. The latter enzyme was thought to be involved in the metabolism of regulatory peptides by diverse cell types, including small intestinal and renal tubular epithelial cells, macrophages, granulocytes, and synaptic membranes from the CNS. Human aminopeptidase N is a receptor for one strain of human coronavirus that is an important cause of upper respiratory tract infections. Defects in this gene appear to be a cause of various types of leukemia or lymphoma.

 Tel: 1-631-559-9269 1-516-512-3133

 Email: [info@creative-biomart.com](mailto:info@creative-biomart.com)  Fax: 1-631-938-8127

 45-1 Ramsey Road, Shirley, NY 11967, USA

<b>Form</b>	Freeze-dried powder
<b>Molecular Mass</b>	Predicted Molecular Mass: 22.2kDa.
<b>Endotoxin</b>	<1.0EU per 1g (determined by the LAL method).
<b>Purity</b>	>95%
<b>Characteristic</b>	The isoelectric point is 9.2.
<b>Applications</b>	SDS-PAGE; WB; ELISA; IP.
<b>Stability</b>	The thermal stability is described by the loss rate. The loss rate was determined by accelerated thermal degradation test, that is, incubate the protein at 37°C for 48h, and no obvious degradation and precipitation were observed. The loss rate is less than 5% within the expiration date under appropriate storage condition.
<b>Storage</b>	Avoid repeated freeze/thaw cycles. Store at 2-8°C for one month. Aliquot and store at -80°C for 12 months.
<b>Storage buffer</b>	Supplied as lyophilized form in PBS, pH7.4, containing 5% trehalose, 0.01% sarcosyl.
<b>Reconstitution</b>	Reconstitute in sterile PBS, pH7.2-pH7.4.

## GENE INFORMATION

<b>Gene Name</b>	ANPEP alanyl aminopeptidase, membrane [ Homo sapiens (human) ]
<b>Official Symbol</b>	ANPEP
<b>Synonyms</b>	APN; CD13; LAP1; P150; PEPN; GP150; AP-M; AP-N; alanyl (membrane)

 Tel: 1-631-559-9269 1-516-512-3133

 Email: [info@creative-biomart.com](mailto:info@creative-biomart.com)  Fax: 1-631-938-8127

 45-1 Ramsey Road, Shirley, NY 11967, USA

aminopeptidase; aminopeptidase M; hAPN; membrane alanyl; aminopeptidase; microsomal aminopeptidase; myeloid plasma membrane glycoprotein CD13; aminopeptidase N

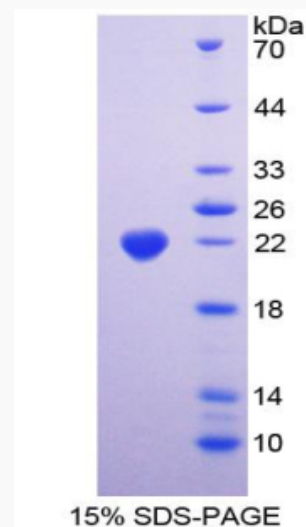
**Gene ID** 290

**mRNA Refseq** NM\_001150.2

**Protein Refseq** NP\_001141.2

**UniProt ID** P15144

**SDS-PAGE**



 Tel: 1-631-559-9269 1-516-512-3133

 Email: [info@creative-biomart.com](mailto:info@creative-biomart.com)  Fax: 1-631-938-8127

 45-1 Ramsey Road, Shirley, NY 11967, USA