

Recombinant Human ANPEP Protein, His-tagged

Cat. No. ANPEP-159H Lot. No. (See product label)

SPECIFICATION

Product Overview	Recombinant Human ANPEP Protein (Tyr33-Gly480) with N-His tag was expressed in E. coli.
Species	Human
Source	E.coli
ProteinLength	Tyr33-Gly480

Description

Aminopeptidase N is located in the small-intestinal and renal microvillar membrane, and also in other plasma membranes. In the small intestine aminopeptidase N plays a role in the final digestion of peptides generated from hydrolysis of proteins by gastric and pancreatic proteases. Its function in proximal tubular epithelial cells and other cell types is less clear. The large extracellular carboxyterminal domain contains a pentapeptide consensus sequence characteristic of members of the zinc-binding metalloproteinase superfamily. Sequence comparisons with known enzymes of this class showed that CD13 and aminopeptidase N are identical. The latter enzyme was thought to be involved in the metabolism of regulatory peptides by diverse cell types, including small intestinal and renal tubular epithelial cells, macrophages, granulocytes, and synaptic membranes from the CNS. This membrane-bound zinc metalloprotease is known to serve as a receptor for the HCoV-229E alphacoronavirus as well as other non-human coronaviruses. This gene has also been shown to promote angiogenesis, tumor growth, and metastasis and defects in this gene are associated with various types of leukemia and lymphoma.

 Tel: 1-631-559-9269 1-516-512-3133

 Email: info@creative-biomart.com  Fax: 1-631-938-8127

 45-1 Ramsey Road, Shirley, NY 11967, USA

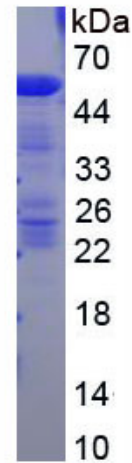
Form	Freeze-dried powder
Molecular Mass	Predicted Molecular Mass: 53.5 kDa Accurate Molecular Mass: 54 kDa
Purity	> 80%
Applications	Positive Control; Immunogen; SDS-PAGE; WB.
Stability	The thermal stability is described by the loss rate. The loss rate was determined by accelerated thermal degradation test, that is, incubate the protein at 37 centigrade for 48h, and no obvious degradation and precipitation were observed. The loss rate is less than 5% within the expiration date under appropriate storage condition.
Storage	Avoid repeated freeze/thaw cycles. Store at 2-8 centigrade for one month. Aliquot and store at -80 centigrade for 12 months.
Storage Buffer	20mM Tris, 150mM NaCl, pH8.0, containing 1mM EDTA, 1mM DTT, 0.01% SKL, 5% Trehalose and Proclin300.
Reconstitution	Reconstitute in sterile water to a concentration of 0.1-1.0 mg/mL. Do not vortex.
GENE INFORMATION	
Gene Name	ANPEP alanyl aminopeptidase, membrane [Homo sapiens (human)]
Official Symbol	ANPEP
Synonyms	ANPEP; alanyl aminopeptidase, membrane; APN; AP-M; AP-N; CD13; LAP1; P150; PEPN; hAPN; GP150; aminopeptidase N; alanyl (membrane) aminopeptidase; aminopeptidase M; membrane alanyl aminopeptidase; microsomal aminopeptidase;

 Tel: 1-631-559-9269 1-516-512-3133

 Email: info@creative-biomart.com  Fax: 1-631-938-8127

 45-1 Ramsey Road, Shirley, NY 11967, USA

myeloid plasma membrane glycoprotein CD13; EC 3.4.11.2

Gene ID 290**mRNA Refseq** NM_001150**Protein Refseq** NP_001141**MIM** 151530**UniProt ID** P15144 Tel: 1-631-559-9269 1-516-512-3133 Email: info@creative-biomart.com  Fax: 1-631-938-8127 45-1 Ramsey Road, Shirley, NY 11967, USA