

Active Recombinant Human ANPEP protein(603 Met/Ile), His tagged

Cat. No. ANPEP-249H Lot. No. (See product label)

SPECIFICATION

Product Overview	Active Recombinant Human ANPEP protein(Lys 69-Lys 967603 Met/Ile)(NP_001141.2) was expressed in Human Cells with N-terminal signal peptide and C-terminal polyhistidine tag.
Species	Human
Source	Human Cells
ProteinLength	69-967 aa
Form	Lyophilized from sterile PBS, pH 7.3.
Bio-activity	Measured by its ability to cleave the fluorogenic peptide substrate, Ala-7-amido-4-methylcoumarin (Ala-AMC). The specific activity is >2,500 pmoles/min/μg.
Molecular Mass	The recombinant human ANPEP protein consists of 910 amino acids and has a predicted molecular mass of 104.2 kDa. In SDS-PAGE under reducing conditions, the apparent molecular mass of rhANPEP is approximately 135-140 kDa due to glycosylation.
Endotoxin	< 1.0 EU per μg of the protein as determined by the LAL method.
Purity	> 97 % as determined by SDS-PAGE

 Tel: 1-631-559-9269 1-516-512-3133

 Email: info@creative-biomart.com  Fax: 1-631-938-8127

 45-1 Ramsey Road, Shirley, NY 11967, USA

Storage Store it under sterile conditions at -20°C to -80°C upon receiving. Recommend to aliquot the protein into smaller quantities for optimal storage. Avoid repeated freeze-thaw cycles.

Reconstitution It is recommended that sterile water be added to the vial to prepare a stock solution of 0.2 ug/ul. Centrifuge the vial at 4°C before opening to recover the entire contents.

GENE INFORMATION

Gene Name [ANPEP alanyl \(membrane\) aminopeptidase \[Homo sapiens \]](#)

Official Symbol [ANPEP](#)

Synonyms ANPEP; alanyl (membrane) aminopeptidase; CD13, PEPN; aminopeptidase N; aminopeptidase M; gp150; LAP1; microsomal aminopeptidase; p150; AP-M; AP-N; hAPN; alanyl aminopeptidase; myeloid plasma membrane glycoprotein CD13; APN; CD13; P150; PEPN; GP150;

Gene ID [290](#)

mRNA Refseq [NM_001150](#)

Protein Refseq [NP_001141](#)

MIM [151530](#)

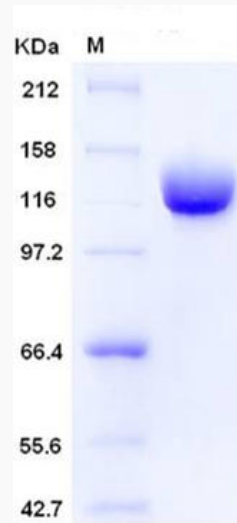
UniProt ID [P15144](#)

 Tel: 1-631-559-9269 1-516-512-3133

 Email: info@creative-biomart.com  Fax: 1-631-938-8127

 45-1 Ramsey Road, Shirley, NY 11967, USA

SDS-PAGE



 Tel: 1-631-559-9269 1-516-512-3133

 Email: info@creative-biomart.com  Fax: 1-631-938-8127

 45-1 Ramsey Road, Shirley, NY 11967, USA