

Recombinant Human ANPEP Protein (Tyr33-Lys967), C-His tagged

Cat. No. ANPEP-4215H **Lot. No.** (See product label)

SPECIFICATION

Product Overview	Recombinant human ANPEP (Tyr33-Lys967) fused with the C-terminal His tag was expressed in Mammalian cells.
Species	Human
Source	Mammalian Cells
ProteinLength	Tyr33-Lys967
Form	Lyophilized powder/frozen liquid
Molecular Mass	102.96 kDa
Endotoxin	< 1.0 EU/μg of the protein as determined by the LAL method.
Purity	>90% as determined by SDS-PAGE.
Notes	For research use only.
Storage	Use a manual defrost freezer and avoid repeated freeze thaw cycles. Store at 2 to 8 centigrade for one week. Store at -20 to -80 centigrade for twelve months from the date of receipt.
Storage Buffer	Supplied as solution form in PBS or lyophilized from PBS.

 Tel: 1-631-559-9269 1-516-512-3133

 Email: info@creative-biomart.com  Fax: 1-631-938-8127

 45-1 Ramsey Road, Shirley, NY 11967, USA

Reconstitution Reconstitute in sterile water for a stock solution.

Shipping They are shipped out with dry ice/blue ice unless customers require otherwise.

GENE INFORMATION

Gene Name [ANPEP alanyl \(membrane\) aminopeptidase \[Homo sapiens \(human\) \]](#)

Official Symbol [ANPEP](#)

Synonyms ANPEP; alanyl (membrane) aminopeptidase; CD13, PEPN; aminopeptidase N; aminopeptidase M; gp150; LAP1; microsomal aminopeptidase; p150; AP-M; AP-N; hAPN; alanyl aminopeptidase; myeloid plasma membrane glycoprotein CD13; APN; CD13; P150; PEPN; GP150;

Gene ID [290](#)

mRNA Refseq [NM_001150](#)

Protein Refseq [NP_001141](#)

MIM [151530](#)

UniProt ID [P15144](#)

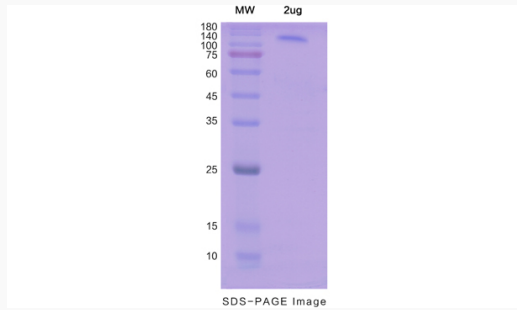
 Tel: 1-631-559-9269 1-516-512-3133

 Email: info@creative-biomart.com  Fax: 1-631-938-8127

 45-1 Ramsey Road, Shirley, NY 11967, USA



SDS-PAGE



Tel: 1-631-559-9269 1-516-512-3133

Email: info@creative-biomart.com Fax: 1-631-938-8127

45-1 Ramsey Road, Shirley, NY 11967, USA