

Active Native Human ANPEP protein

Cat. No. ANPEP-621H Lot. No. (See product label)

SPECIFICATION

Product Overview Human ANPEP (967 amino acids) native protein from human serum.

Species Human

Source Human

Description

Aminopeptidase N is located in the small-intestinal and renal microvillar membrane, and also in other plasma membranes. In the small intestine aminopeptidase N plays a role in the final digestion of peptides generated from hydrolysis of proteins by gastric and pancreatic proteases. Its function in proximal tubular epithelial cells and other cell types is less clear. The large extracellular carboxyterminal domain contains a pentapeptide consensus sequence characteristic of members of the zinc-binding metalloproteinase superfamily. Sequence comparisons with known enzymes of this class showed that CD13 and aminopeptidase N are identical. The latter enzyme was thought to be involved in the metabolism of regulatory peptides by diverse cell types, including small intestinal and renal tubular epithelial cells, macrophages, granulocytes, and synaptic membranes from the CNS. Human aminopeptidase N is a receptor for one strain of human coronavirus that is an important cause of upper respiratory tract infections. Defects in this gene appear to be a cause of various types of leukemia or lymphoma. [provided by RefSeq, Jul 2008]

Form Liquid

Bio-activity > 500 mU/mg (L-Leu-pNA at 37°C, pH 7.2).

 Tel: 1-631-559-9269 1-516-512-3133

 Email: info@creative-biomart.com  Fax: 1-631-938-8127

 45-1 Ramsey Road, Shirley, NY 11967, USA

Molecular Mass	110-130 kDa
Purity	> 90% by SDS-PAGE
Applications	Functional Study; SDS-PAGE
Storage	Store at -80 centigrade. Aliquot to avoid repeated freezing and thawing.
Storage Buffer	In 20 mM Tris-HCl, 500 mM NaCl, 1 mM CaCl ₂ , pH 7.4

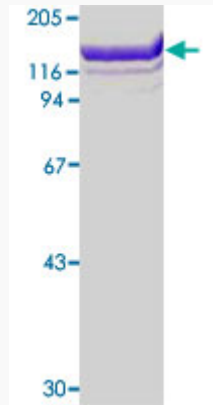
GENE INFORMATION

Gene Name	ANPEP alanyl (membrane) aminopeptidase [Homo sapiens]
Official Symbol	ANPEP
Synonyms	ANPEP; alanyl (membrane) aminopeptidase; CD13, PEPN; aminopeptidase N; aminopeptidase M; gp150; LAP1; microsomal aminopeptidase; p150; AP-M; AP-N; hAPN; alanyl aminopeptidase; myeloid plasma membrane glycoprotein CD13; APN; CD13; P150; PEPN; GP150;
Gene ID	290
mRNA Refseq	NM_001150
Protein Refseq	NP_001141
MIM	151530
UniProt ID	P15144

 Tel: 1-631-559-9269 1-516-512-3133

 Email: info@creative-biomart.com  Fax: 1-631-938-8127

 45-1 Ramsey Road, Shirley, NY 11967, USA



15% SDS-PAGE Stained with Coomassie Blue

 Tel: 1-631-559-9269 1-516-512-3133

 Email: info@creative-biomart.com  Fax: 1-631-938-8127

 45-1 Ramsey Road, Shirley, NY 11967, USA