

# Recombinant Full Length Human ANPEP Protein, C-Flag-tagged

Cat. No. ANPEP-794HFL Lot. No. (See product label)

## SPECIFICATION

### Product Overview

Recombinant Full Length Human ANPEP Protein, fused to Flag-tag at C-terminus, was expressed in Mammalian cells.

### Species

Human

### Source

Mammalian Cells

### Description

Aminopeptidase N is located in the small-intestinal and renal microvillar membrane, and also in other plasma membranes. In the small intestine aminopeptidase N plays a role in the final digestion of peptides generated from hydrolysis of proteins by gastric and pancreatic proteases. Its function in proximal tubular epithelial cells and other cell types is less clear. The large extracellular carboxyterminal domain contains a pentapeptide consensus sequence characteristic of members of the zinc-binding metalloproteinase superfamily. Sequence comparisons with known enzymes of this class showed that CD13 and aminopeptidase N are identical. The latter enzyme was thought to be involved in the metabolism of regulatory peptides by diverse cell types, including small intestinal and renal tubular epithelial cells, macrophages, granulocytes, and synaptic membranes from the CNS. This membrane-bound zinc metalloprotease is known to serve as a receptor for the HCoV-229E alphacoronavirus as well as other non-human coronaviruses. This gene has also been shown to promote angiogenesis, tumor growth, and metastasis and defects in this gene are associated with various types of leukemia and lymphoma.

 Tel: 1-631-559-9269 1-516-512-3133

 Email: [info@creative-biomart.com](mailto:info@creative-biomart.com)  Fax: 1-631-938-8127

 45-1 Ramsey Road, Shirley, NY 11967, USA

<b>Form</b>	25 mM Tris HCl, pH 7.3, 100 mM glycine, 10% glycerol.
<b>Molecular Mass</b>	106.3 kDa
<b>AA Sequence</b>	<p>MAKGFYISKSLGILGILLGVAAVCTIIALSVVYSQEKNKNANSSPVASTTPSASATTNP  ASATTLDQSKA WNRYPRLPNTLKPDSYQVTLRPYLTPNDRGLYVFKGSSTVRFTCKE  ATDVIIIHKKLNYTLSQGHRVLR GVGGSQPPDIDKTELVEPTEYLVVHLKGSVLKD  SQYEMDSEFEGELADDLAGFYRSEYMEGNVRKVVATT QMQAADARKSFPCFDEP  AMKAEFNITLIHPKDLTALS NMLPKGPSTPLPEDPNWNVTEFHTTPKMSTYLL AFIVS  EFDYVEKQASNGVLIRIWARPSAIAAGHGDYALNVTGPILNFFAGHYDTPYPLPKSD  QIGLPDFN AGAMENWGLVTYRENSLLFDPLSSSSSNKERVVTVIAHELAHQWFGNL  VTIEWWNDLWLNIEGFASYVEYL GADYAEPTWNLKDLMLVNDVYRVMVAVDALASSH  PLSTPASEINTPAQISELFDAYSISKASVLRMLSSF LSEDVFKQGLASYLHTFAYQN  TIYLNLDWHLQEAVNNRSIQLPTTVRDIMNRWTLQMGPVITVDTSTGT LSQEHFLL  DPDSNVTRPSEFNYSVWVWVITPITSIRDGRQQQDYWLIDVRAQNDFSTSGNEWVLLNLN  VTGYY RVNYDEENWRKIQTQLQRDHSVIPINRAQIINDAFNLASAHKVPVTLALNNT  LFLIEERQYMPWEAALS SLSYFKLMFDRSEVYGPKNYLKQVTPLEFIHFRNNTNN  WREIPENLMDQYSEVNAISTACSNVPECEE MVSGLFKQWMENPNNNPIHPNLRS  TVYCNAIAQGGEEWDFAWEQFRNATLVNEADKLRAALACSKELWI LNRYLSYTLN  PDLIRKQDATSTIISITNNVIGQGLVWDFVQSNWKKLFNDYGGGSFSFSNLIQAVTRR  FS  TEYELQQLEQFKKDNEETGFGSGTRALEQALEKTKANIKWVKENKEVVLQWFTENS  KTRTRPLEQKLISEEDLAANDILDYKDDDDKV</p>
<b>Purity</b>	> 80% as determined by SDS-PAGE and Coomassie blue staining.
<b>Stability</b>	Stable for 12 months from the date of receipt of the product under proper storage and handling conditions. Avoid repeated freeze-thaw cycles.
<b>Storage</b>	Store at -80 centigrade.

 Tel: 1-631-559-9269 1-516-512-3133

 Email: [info@creative-biomart.com](mailto:info@creative-biomart.com)  Fax: 1-631-938-8127

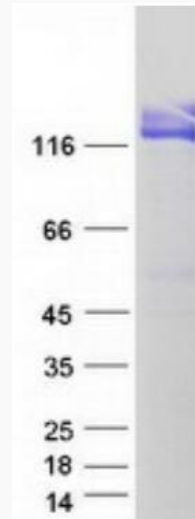
 45-1 Ramsey Road, Shirley, NY 11967, USA

<b>Concentration</b>	>50 ug/mL as determined by microplate BCA method.
<b>Preparation</b>	Recombinant protein was captured through anti-DDK affinity column followed by conventional chromatography steps.
<b>Protein Families</b>	Druggable Genome, ES Cell Differentiation/IPS, Protease, Transmembrane
<b>Protein Pathways</b>	Glutathione metabolism, Hematopoietic cell lineage, Metabolic pathways, Renin-angiotensin system
<b>Full Length</b>	Full L.
<b>GENE INFORMATION</b>	
<b>Gene Name</b>	<a href="#">ANPEP alanyl aminopeptidase, membrane [ Homo sapiens (human) ]</a>
<b>Official Symbol</b>	<a href="#">ANPEP</a>
<b>Synonyms</b>	APN; AP-M; AP-N; CD13; LAP1; P150; PEPN; hAPN; GP150
<b>Gene ID</b>	<a href="#">290</a>
<b>mRNA Refseq</b>	<a href="#">NM_001150.3</a>
<b>Protein Refseq</b>	<a href="#">NP_001141.2</a>
<b>MIM</b>	<a href="#">151530</a>
<b>UniProt ID</b>	<a href="#">P15144</a>

 Tel: 1-631-559-9269 1-516-512-3133

 Email: [info@creative-biomart.com](mailto:info@creative-biomart.com)  Fax: 1-631-938-8127

 45-1 Ramsey Road, Shirley, NY 11967, USA



Coomassie blue staining of purified ANPEP protein.

 Tel: 1-631-559-9269 1-516-512-3133

 Email: [info@creative-biomart.com](mailto:info@creative-biomart.com)  Fax: 1-631-938-8127

 45-1 Ramsey Road, Shirley, NY 11967, USA