

Recombinant Human ANTXR1 Protein, His-tagged

Cat. No. ANTXR1-2117H **Lot. No.** (See product label)

SPECIFICATION

Product Overview	Recombinant Human ANTXR1 Protein is produced by Yeast expression system. This protein is fused with a 6xHis tag at the N-terminal. Research Area: Tags & Cell Markers. Protein Description: Partial.
Species	Human
Source	Yeast
Description	Plays a role in cell attachment and migration. Interacts with Extracellular domain matrix proteins and with the actin cytoskeleton. Mediates adhesion of cells to type 1 collagen and gelatin, reorganization of the actin cytoskeleton and promotes cell spreading. Plays a role in the angiogenic response of cultured umbilical vein endothelial cells.
Form	Tris-based buffer,50% glycerol
Molecular Mass	34.4 kDa
Purity	> 90% as determined by SDS-PAGE.
Notes	Repeated freezing and thawing is not recommended. Store working aliquots at 4 centigrade for up to one week.
Storage	The shelf life is related to many factors, storage state, buffer ingredients, storage temperature and the stability of the protein itself. Generally, the shelf life of liquid form

 Tel: 1-631-559-9269 1-516-512-3133

 Email: info@creative-biomart.com  Fax: 1-631-938-8127

 45-1 Ramsey Road, Shirley, NY 11967, USA

is 6 months at -20 centigrade/-80 centigrade. The shelf life of lyophilized form is 12 months at -20 centigrade/-80 centigrade.

Concentration A hardcopy of COA with reconstitution instruction is sent along with the products.

GENE INFORMATION

Gene Name [ANTXR1 anthrax toxin receptor 1 \[Homo sapiens \]](#)

Official Symbol [ANTXR1](#)

Synonyms [ANTXR1](#); [ATR](#); [FLJ10601](#); [FLJ21776](#); [TEM8](#); [2310008J16Rik](#); [2810405N18Rik](#); [FLJ11298](#);

Gene ID [84168](#)

mRNA Refseq [NM_018153](#)

Protein Refseq [NP_060623](#)

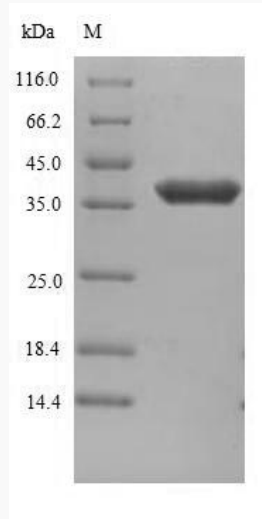
MIM [606410](#)

UniProt ID [Q9H6X2](#)

 Tel: 1-631-559-9269 1-516-512-3133

 Email: info@creative-biomart.com  Fax: 1-631-938-8127

 45-1 Ramsey Road, Shirley, NY 11967, USA



(Tris-Glycine gel) Discontinuous SDS-PAGE (reduced) with 5% enrichment gel and 15% separation gel.

 Tel: 1-631-559-9269 1-516-512-3133

 Email: info@creative-biomart.com  Fax: 1-631-938-8127

 45-1 Ramsey Road, Shirley, NY 11967, USA