

# Recombinant Human ANTXR1 Protein, Myc/DDK-tagged, C13 and N15-labeled

**Cat. No.** ANTXR1-2478H    **Lot. No.** (See product label)

## SPECIFICATION

<b>Product Overview</b>	ANTXR1 MS Standard C13 and N15-labeled recombinant protein (NP_444262) with a C-terminal MYC/DDK tag, was expressed in HEK293 cells.
<b>Species</b>	Human
<b>Source</b>	HEK293
<b>Description</b>	This gene encodes a type I transmembrane protein and is a tumor-specific endothelial marker that has been implicated in colorectal cancer. The encoded protein has been shown to also be a docking protein or receptor for Bacillus anthracis toxin, the causative agent of the disease, anthrax. The binding of the protective antigen (PA) component, of the tripartite anthrax toxin, to this receptor protein mediates delivery of toxin components to the cytosol of cells. Once inside the cell, the other two components of anthrax toxin, edema factor (EF) and lethal factor (LF) disrupt normal cellular processes. Three alternatively spliced variants that encode different protein isoforms have been described.
<b>Molecular Mass</b>	38.3 kDa
<b>AA Sequence</b>	MATAERRALGIGFQWLSLATLVLICAGQGGRREDGGPACYGGFDLYFILDKSGSVLH HWNEIYYFVEQLAHKFISPQLRMSFIVFSTRGTTLMKLTEDREQIRQGLEELQKVLPG GDTYMHEGFERASEQIYYENRQGYRTASVIIALTDGELHEDLFFYSEREANRSRDLG AIVYCVGVKDFNETQLARIADSKDHVFPVNDGFQALQGIIHSILKKSCIEILAAEPSTIC

 Tel: 1-631-559-9269    1-516-512-3133

 Email: [info@creative-biomart.com](mailto:info@creative-biomart.com)     Fax: 1-631-938-8127

 45-1 Ramsey Road, Shirley, NY 11967, USA

AGESFQVVVRGNGFRHARNVDRVLCSEKINDSVTLNEKPFSVEDTYLLCPAPILKEV  
 GMKAALQVSMNDGLSFISSSVIITTTTHCSDGSILAIALLLIFLLLALALLWWFWPLCCTV  
 IIEVPPPPAESEENKIKTRTRPLEQKLISEEDLAANDILDYKDDDDKV

**Purity** > 80% as determined by SDS-PAGE and Coomassie blue staining

**Stability** Stable for 3 months from receipt of products under proper storage and handling conditions.

**Storage** Store at -80 centigrade. Avoid repeated freeze-thaw cycles.

**Concentration** 50 µg/mL as determined by BCA

**Storage Buffer** 100 mM glycine, 25 mM Tris-HCl, pH 7.3.

## GENE INFORMATION

**Gene Name** [ANTXR1 anthrax toxin receptor 1 \[ Homo sapiens \(human\) \]](#)

**Official Symbol** [ANTXR1](#)

**Synonyms** ANTXR1; anthrax toxin receptor 1; anthrax toxin receptor; ATR; FLJ10601; FLJ21776; TEM8; tumor endothelial marker 8 precursor; 2310008J16Rik; 2810405N18Rik; tumor endothelial marker 8; FLJ11298;

**Gene ID** [84168](#)

**mRNA Refseq** [NM\\_053034](#)

**Protein Refseq** [NP\\_444262](#)

 Tel: 1-631-559-9269 1-516-512-3133

 Email: [info@creative-biomart.com](mailto:info@creative-biomart.com)  Fax: 1-631-938-8127

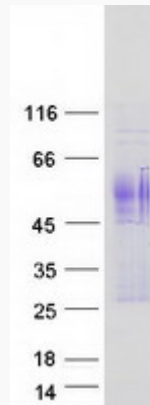
 45-1 Ramsey Road, Shirley, NY 11967, USA



MIM 606410

UniProt ID Q9H6X2

SDS-PAGE



Tel: 1-631-559-9269 1-516-512-3133

Email: [info@creative-biomart.com](mailto:info@creative-biomart.com) Fax: 1-631-938-8127

45-1 Ramsey Road, Shirley, NY 11967, USA