

## Recombinant Human ANTXR2 protein, His-tagged

**Cat. No.** ANTXR2-1677H    **Lot. No.** (See product label)

### SPECIFICATION

<b>Product Overview</b>	Recombinant Human ANTXR2 protein(NP_477520.2)(Gln34-Gly318), fused with C-terminal His tag, was expressed in HEK293.
<b>Species</b>	Human
<b>Source</b>	C-His
<b>ProteinLength</b>	Gln34-Gly318
<b>Tag</b>	C-His
<b>Form</b>	Lyophilized from 0.22µm filtered solution in PBS (pH 7.4). Normally 8% trehalose is added as protectant before lyophilization.
<b>Bio-activity</b>	
<b>Molecular Mass</b>	The protein has a predicted MW of 31.81 kDa. Due to glycosylation, the protein migrates to 38-43 kDa based on Tris-Bis PAGE result.
<b>Endotoxin</b>	Less than 1EU per µg by the LAL method.
<b>Purity</b>	> 95% as determined by Tris-Bis PAGE; > 95% as determined by HPLC.
<b>Storage</b>	Reconstituted protein stable at -80°C for 12 months, 4°C for 1 week. Use a manual defrost freezer and avoid repeated freeze-thaw cycles.

 Tel: 1-631-559-9269    1-516-512-3133

 Email: [info@creative-biomart.com](mailto:info@creative-biomart.com)     Fax: 1-631-938-8127

 45-1 Ramsey Road, Shirley, NY 11967, USA

**Reconstitution** Centrifuge tubes before opening. Reconstituting to a concentration more than 100 µg/ml is recommended. Dissolve the lyophilized protein in distilled water.

## GENE INFORMATION

**Gene Name** [ANTXR2 anthrax toxin receptor 2 \[ Homo sapiens \]](#)

**Official Symbol** [ANTXR2](#)

**Synonyms** ANTXR2; anthrax toxin receptor 2; capillary morphogenesis protein 2; CMG 2; CMG2; FLJ31074; capillary morphogenesis gene 2 protein; ISH; JHF; CMG-2; MGC45856; MGC111533;

**Gene ID** [118429](#)

**mRNA Refseq** [NM\\_001145794](#)

**Protein Refseq** [NP\\_001139266](#)

**MIM** [608041](#)

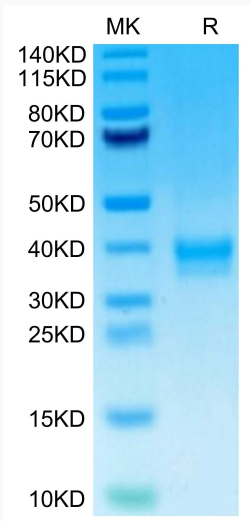
**UniProt ID** [P58335](#)

 Tel: 1-631-559-9269 1-516-512-3133

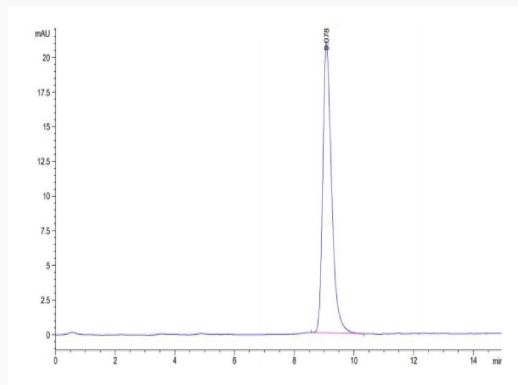
 Email: [info@creative-biomart.com](mailto:info@creative-biomart.com)  Fax: 1-631-938-8127

 45-1 Ramsey Road, Shirley, NY 11967, USA

**Tris-Bis PAGE**



**SEC-HPLC**



 Tel: 1-631-559-9269 1-516-512-3133

 Email: [info@creative-biomart.com](mailto:info@creative-biomart.com)  Fax: 1-631-938-8127

 45-1 Ramsey Road, Shirley, NY 11967, USA