

Recombinant Human ANTXR2 Protein, Myc/DDK-tagged, C13 and N15-labeled

Cat. No. ANTXR2-832H **Lot. No.** (See product label)

SPECIFICATION

Product Overview

ANTXR2 MS Standard C13 and N15-labeled recombinant protein (NP_001139266) with a C-terminal MYC/DDK tag, was expressed in HEK293 cells.

Species

Human

Source

HEK293

Description

This gene encodes a receptor for anthrax toxin. The protein binds to collagen IV and laminin, suggesting that it may be involved in extracellular matrix adhesion. Mutations in this gene cause juvenile hyaline fibromatosis and infantile systemic hyalinosis. Multiple transcript variants encoding different isoforms have been found for this gene.

Molecular Mass

53.5 kDa

AA Sequence

MVAERSPARSPGSWLFPGLWLLVLSGPGLLRAQEQPSCRRAFDLYFVLDKSGSV
ANNWIEIYNFVQQLAERFVSPERMRLSFIVFSSQATIILPLTGDRGKISKGLEDLKRVS
VGETYIHEGLKLANEQIQKAGGLKTSSIIIALTDGKLDGLVPSYAEKEAKISRSLGASV
YCVGVLDFEQAQLERIADSKEQVFPVKGGFQALKGIINSILAQSCTEILELQPSSVCV
GEEFQIVLSGRGFMGLSRNGSVLCTYTVNETYTTSVKPVSVQLNSMLCPAPILNKAG
ETLDVSVSFNGGKSVISGSLIVTATECSNGIAAIIIVLVLGIGLMWWFWPLCCKVV
IKDPPPPAPAPKEEEEEPLPTKKWPTVDASYGGRGVGGIKRMEVRWGDKGSTE
EGARLEKAKNAVVKIPEETEPIRPRPPRPKPTHQPPQTKWYTPIKGRDLWALLR
RQYDRVSLMRPQEGDEVCIWECIEKELTATRTRPLEQKLISEEDLAANDILDYKDDD

 Tel: 1-631-559-9269 1-516-512-3133

 Email: info@creative-biomart.com  Fax: 1-631-938-8127

 45-1 Ramsey Road, Shirley, NY 11967, USA

| | |
|-------------------------|---|
| | DKV |
| Purity | > 80% as determined by SDS-PAGE and Coomassie blue staining |
| Stability | Stable for 3 months from receipt of products under proper storage and handling conditions. |
| Storage | Store at -80 centigrade. Avoid repeated freeze-thaw cycles. |
| Concentration | 50 µg/mL as determined by BCA |
| Storage Buffer | 100 mM glycine, 25 mM Tris-HCl, pH 7.3. |
| GENE INFORMATION | |
| Gene Name | ANTXR2 anthrax toxin receptor 2 [Homo sapiens (human)] |
| Official Symbol | ANTXR2 |
| Synonyms | ANTXR2; anthrax toxin receptor 2; capillary morphogenesis protein 2; CMG 2; CMG2; FLJ31074; capillary morphogenesis gene 2 protein; ISH; JHF; CMG-2; MGC45856; MGC111533; |
| Gene ID | 118429 |
| mRNA Refseq | NM_001145794 |
| Protein Refseq | NP_001139266 |
| MIM | 608041 |

 Tel: 1-631-559-9269 1-516-512-3133

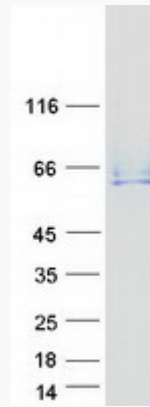
 Email: info@creative-biomart.com  Fax: 1-631-938-8127

 45-1 Ramsey Road, Shirley, NY 11967, USA

UniProt ID

P58335

SDS-PAGE



 Tel: 1-631-559-9269 1-516-512-3133

 Email: info@creative-biomart.com  Fax: 1-631-938-8127

 45-1 Ramsey Road, Shirley, NY 11967, USA