

# Recombinant Human ANXA1 Protein, Myc/DDK-tagged, C13 and N15-labeled

Cat. No. ANXA1-1725H Lot. No. (See product label)

## SPECIFICATION

<b>Product Overview</b>	ANXA1 MS Standard C13 and N15-labeled recombinant protein (NP_000691) with a C-terminal MYC/DDK tag, was expressed in HEK293 cells.
<b>Species</b>	Human
<b>Source</b>	HEK293
<b>Description</b>	This gene encodes a membrane-localized protein that binds phospholipids. This protein inhibits phospholipase A2 and has anti-inflammatory activity. Loss of function or expression of this gene has been detected in multiple tumors.
<b>Molecular Mass</b>	38.7 kDa
<b>AA Sequence</b>	MAMVSEFLKQAWFIENEEQEYVQTVKSSKGGPGSAVSPYPTFNPSSDVAALHKAIM VKGVDIATIIDILTKRNNAQRQQIKAAYLQETGKPLDETLKKALTGHLEEVVLLALLKTP AQFDADELRAAMKGLGTDEDTLIEILASRTNKEIRDINRVYREELKRDLAKDITSDTSG DFRNALLSLAKGDRSEDFGVNEDLADSDARALYEAGERRKGTDVNVFNTILTTRSYP QLRRVFQKYTKYSKHMNKVLDLELKGDIKCLTAIVKCATSKPAFFAEKLVQAMKG VGTRHKALIRIMVSRSEIDMNDIKAFYQKMYGISLCQAILDETCKGDYKILVALCGGNT RTRPLEQKLISEEDLAANDILDYKDDDDKV
<b>Purity</b>	> 80% as determined by SDS-PAGE and Coomassie blue staining
<b>Stability</b>	Stable for 3 months from receipt of products under proper storage and handling

 Tel: 1-631-559-9269 1-516-512-3133

 Email: [info@creative-biomart.com](mailto:info@creative-biomart.com)  Fax: 1-631-938-8127

 45-1 Ramsey Road, Shirley, NY 11967, USA

conditions.

**Storage** Store at -80 centigrade. Avoid repeated freeze-thaw cycles.

**Concentration** 50 µg/mL as determined by BCA

**Storage Buffer** 100 mM glycine, 25 mM Tris-HCl, pH 7.3.

## GENE INFORMATION

**Gene Name** [ANXA1 annexin A1 \[ Homo sapiens \(human\) \]](#)

**Official Symbol** [ANXA1](#)

**Synonyms** ANXA1; annexin A1; ANX1, LPC1; p35; annexin-1; calpactin-2; calpactin II; lipocortin I; chromobindin-9; annexin I (lipocortin I); phospholipase A2 inhibitory protein; ANX1; LPC1;

**Gene ID** [301](#)

**mRNA Refseq** [NM\\_000700](#)

**Protein Refseq** [NP\\_000691](#)

**MIM** [151690](#)

**UniProt ID** [P04083](#)

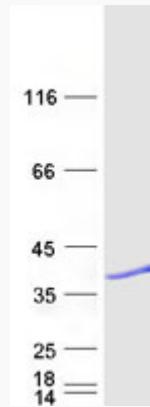
 Tel: 1-631-559-9269 1-516-512-3133

 Email: [info@creative-biomart.com](mailto:info@creative-biomart.com)  Fax: 1-631-938-8127

 45-1 Ramsey Road, Shirley, NY 11967, USA



SDS-PAGE



Tel: 1-631-559-9269 1-516-512-3133

Email: [info@creative-biomart.com](mailto:info@creative-biomart.com) Fax: 1-631-938-8127

45-1 Ramsey Road, Shirley, NY 11967, USA