

# Recombinant Full Length Human ANXA11 Protein, C-Flag-tagged

**Cat. No.** ANXA11-1121HFL    **Lot. No.** (See product label)

## SPECIFICATION

<b>Product Overview</b>	Recombinant Full Length Human ANXA11 Protein, fused to Flag-tag at C-terminus, was expressed in Mammalian cells.
<b>Species</b>	Human
<b>Source</b>	Mammalian Cells
<b>Description</b>	This gene encodes a member of the annexin family, a group of calcium-dependent phospholipid-binding proteins. Annexins have unique N-terminal domains and conserved C-terminal domains, which contain calcium-dependent phospholipid-binding sites. The encoded protein is a 56-kD antigen recognized by sera from patients with various autoimmune diseases. Several transcript variants encoding two different isoforms have been identified.
<b>Form</b>	25 mM Tris HCl, pH 7.3, 100 mM glycine, 10% glycerol.
<b>Molecular Mass</b>	54.2 kDa
<b>AA Sequence</b>	MSYPGYPPPPGGYPPAAPGGGPWGGAAAYPPPPSMPPIGLDNVATYAGQFNQDYL SGMAANMSGTFGGANM PNLYPGAPGAGYPPVPPGGFGQPPSAQQPVPPYGMYP PPGGNPPSRMPSYPPYPGAPVPGQPMPPPGQQP PGAYPGQPPVTYPGQPPVPLP GQQQPVPSYPGYPGSGTVTPAVPPTQFGSRGTITDAPGFDPLRDAEVLK KAMKGF GTDEQAIIDCLGSRSNKQRQQILLSFKTAYGKDLIKDLKSELSGNFKILALMKTPVL FDIYE IKEAIKGVGTDEACLEILASRSNEHIRELNRAYKAEFKKTLEEAIRSDTSGHFQ

 Tel: 1-631-559-9269    1-516-512-3133

 Email: [info@creative-biomart.com](mailto:info@creative-biomart.com)     Fax: 1-631-938-8127

 45-1 Ramsey Road, Shirley, NY 11967, USA

RLLISLSQGNRDEST NVDMSLAQRDAQELYAAGENRLGTDESKFNAVLCRSRAHL  
 VAVFNEYQRMTGRDIEKSICREMSGDLEE GMLAVVKCLKNTPAFFAERLNKAMRGA  
 GTKDRTLIRIMVSRSETDLLDIRSEYKRMYGKSLYHDISGDTS  
 GDYRKILLKICGGNDTRTRPLEQKLISEEDLAANDILDYKDDDDKV

**Purity** > 80% as determined by SDS-PAGE and Coomassie blue staining.

**Stability** Stable for 12 months from the date of receipt of the product under proper storage and handling conditions. Avoid repeated freeze-thaw cycles.

**Storage** Store at -80 centigrade.

**Concentration** >50 ug/mL as determined by microplate BCA method.

**Preparation** Recombinant protein was captured through anti-DDK affinity column followed by conventional chromatography steps.

**Full Length** Full L.

## GENE INFORMATION

**Gene Name** [ANXA11 annexin A11 \[ Homo sapiens \(human\) \]](#)

**Official Symbol** [ANXA11](#)

**Synonyms** ALS23; ANX11; CAP50; CAP-50; IBMWMA

**Gene ID** [311](#)

**mRNA Refseq** [NM\\_001157.3](#)

 Tel: 1-631-559-9269 1-516-512-3133

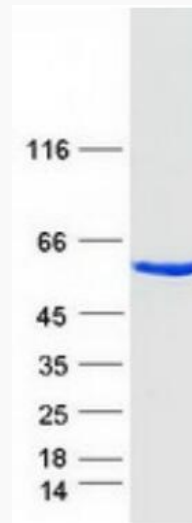
 Email: [info@creative-biomart.com](mailto:info@creative-biomart.com)  Fax: 1-631-938-8127

 45-1 Ramsey Road, Shirley, NY 11967, USA

**Protein Refseq** NP\_001148.1

**MIM** 602572

**UniProt ID** P50995



Coomassie blue staining of purified ANXA11 protein.

 Tel: 1-631-559-9269 1-516-512-3133

 Email: [info@creative-biomart.com](mailto:info@creative-biomart.com)  Fax: 1-631-938-8127

 45-1 Ramsey Road, Shirley, NY 11967, USA