

## Recombinant Human ANXA3 Protein (Met1-Asp323), Tag Free

Cat. No. ANXA3-0198H Lot. No. (See product label)

### SPECIFICATION

<b>Product Overview</b>	Recombinant human ANXA3 (Met1-Asp323) without tag was expressed in E. coli.
<b>Species</b>	Human
<b>Source</b>	E.coli
<b>ProteinLength</b>	Met1-Asp323
<b>Form</b>	Lyophilized powder/frozen liquid
<b>Molecular Mass</b>	35.53 kDa
<b>Purity</b>	>90% as determined by SDS-PAGE
<b>Notes</b>	For research use only.
<b>Storage</b>	Use a manual defrost freezer and avoid repeated freeze thaw cycles. Store at 2 to 8 centigrade for one week. Store at -20 to -80 centigrade for twelve months from the date of receipt.
<b>Storage Buffer</b>	Supplied as solution form in PBS or lyophilized from PBS.
<b>Reconstitution</b>	Reconstitute in sterile water for a stock solution.
<b>Shipping</b>	They are shipped out with dry ice/blue ice unless customers require otherwise.

 Tel: 1-631-559-9269 1-516-512-3133

 Email: [info@creative-biomart.com](mailto:info@creative-biomart.com)  Fax: 1-631-938-8127

 45-1 Ramsey Road, Shirley, NY 11967, USA

## GENE INFORMATION

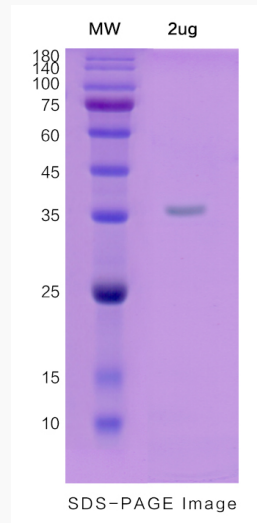
<b>Gene Name</b>	ANXA3 annexin A3 [ Homo sapiens (human) ]
<b>Official Symbol</b>	ANXA3
<b>Synonyms</b>	ANXA3; annexin A3; ANX3; PAP-III; annexin-3; lipocortin III; 35-alpha calcimedlin; calcimedlin 35-alpha; Annexin III (lipocortin III); placental anticoagulant protein III; inositol 1,2-cyclic phosphate 2-phosphohydrolase; annexin III (lipocortin III, 1,2-cyclic-inositol-phosphate phosphodiesterase, placental anticoagulant protein III, calcimedlin 35-alpha);
<b>Gene ID</b>	306
<b>mRNA Refseq</b>	NM_005139
<b>Protein Refseq</b>	NP_005130
<b>MIM</b>	106490
<b>UniProt ID</b>	P12429

 Tel: 1-631-559-9269 1-516-512-3133

 Email: [info@creative-biomart.com](mailto:info@creative-biomart.com)  Fax: 1-631-938-8127

 45-1 Ramsey Road, Shirley, NY 11967, USA

**SDS-PAGE**



 Tel: 1-631-559-9269 1-516-512-3133

 Email: [info@creative-biomart.com](mailto:info@creative-biomart.com)  Fax: 1-631-938-8127

 45-1 Ramsey Road, Shirley, NY 11967, USA