

## Recombinant Human ANXA6 Protein, Fc/His-tagged

Cat. No. ANXA6-02H Lot. No. (See product label)

### SPECIFICATION

<b>Product Overview</b>	Recombinant protein of human annexin A6 (ANXA6), transcript variant 2
<b>Species</b>	Human
<b>Source</b>	HEK293
<b>Description</b>	<p>Annexin VI belongs to a family of calcium-dependent membrane and phospholipid binding proteins. Several members of the annexin family have been implicated in membrane-related events along exocytotic and endocytotic pathways. The annexin VI gene is approximately 60 kbp long and contains 26 exons. It encodes a protein of about 68 kDa that consists of eight 68-amino acid repeats separated by linking sequences of variable lengths. It is highly similar to human annexins I and II sequences, each of which contain four such repeats. Annexin VI has been implicated in mediating the endosome aggregation and vesicle fusion in secreting epithelia during exocytosis. Alternatively spliced transcript variants have been described.</p>
<b>Molecular Mass</b>	75.1 kDa
<b>Purity</b>	> 80% as determined by SDS-PAGE and Coomassie blue staining
<b>Stability</b>	Stable for 12 months from the date of receipt of the product under proper storage and handling conditions. Avoid repeated freeze-thaw cycles.
<b>Storage</b>	Store at -80 centigrade.

 Tel: 1-631-559-9269 1-516-512-3133

 Email: [info@creative-biomart.com](mailto:info@creative-biomart.com)  Fax: 1-631-938-8127

 45-1 Ramsey Road, Shirley, NY 11967, USA

**Concentration** >50 µg/mL as determined by microplate BCA method

**Storage Buffer** 25 mM Tris.HCl, pH 7.3, 100 mM glycine, 10% glycerol.

## GENE INFORMATION

**Gene Name** ANXA6 annexin A6 [ Homo sapiens (human) ]

**Official Symbol** ANXA6

**Synonyms** ANXA6; annexin A6; p68; p70; ANX6; CBP68; CPB-II; annexin A6; 67 kDa calelectrin; annexin VI (p68); annexin-6; calcium-binding protein p68; calelectrin; calphobindin II; chromobindin-20; lipocortin VI; testis secretory sperm-binding protein Li 198a

**Gene ID** 309

**mRNA Refseq** NM\_001155

**Protein Refseq** NP\_001146

**MIM** 114070

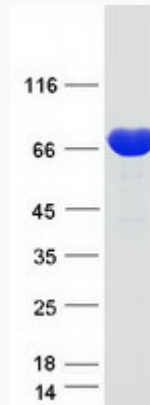
**UniProt ID** P08133

 Tel: 1-631-559-9269 1-516-512-3133

 Email: [info@creative-biomart.com](mailto:info@creative-biomart.com)  Fax: 1-631-938-8127

 45-1 Ramsey Road, Shirley, NY 11967, USA

**SDS-PAGE**



 Tel: 1-631-559-9269 1-516-512-3133

 Email: [info@creative-biomart.com](mailto:info@creative-biomart.com)  Fax: 1-631-938-8127

 45-1 Ramsey Road, Shirley, NY 11967, USA