

## Recombinant Human ANXA6 protein, GST-tagged

Cat. No. ANXA6-636H Lot. No. (See product label)

### SPECIFICATION

<b>Product Overview</b>	Human ANXA6 full-length ORF ( NP_001146.2, 1 a.a. - 673 a.a.) recombinant protein with GST-tag at N-terminal.
<b>Species</b>	Human
<b>Source</b>	Wheat Germ
<b>Description</b>	<p>Annexin VI belongs to a family of calcium-dependent membrane and phospholipid binding proteins. Several members of the annexin family have been implicated in membrane-related events along exocytotic and endocytotic pathways. The annexin VI gene is approximately 60 kbp long and contains 26 exons. It encodes a protein of about 68 kDa that consists of eight 68-amino acid repeats separated by linking sequences of variable lengths. It is highly similar to human annexins I and II sequences, each of which contain four such repeats. Annexin VI has been implicated in mediating the endosome aggregation and vesicle fusion in secreting epithelia during exocytosis. Alternatively spliced transcript variants have been described. [provided by RefSeq, Aug 2010]</p>
<b>Molecular Mass</b>	102.3 kDa
<b>AA Sequence</b>	<p>MAKPAQGAKYRGSIHDFPGFDPNQDAEALYTAMKGFSGDKEALDIITSRSNRQRQE            VCQSYKSPLYGKDLIADLKYELTGKFERLIVGLMRPPAYCDAKEIKDAISGIGTDEKCLI            EILASRTNEQMHQLVAAYKDAYERDLEADIIGDTS GHFQKMLVLLQGTREEDDVVS            EDLVQQDVQDLYEAGELKWGTDEAQFIYILGNRSKQHLRLVFDEYLKTTGKPIEASIR</p>

 Tel: 1-631-559-9269 1-516-512-3133

 Email: [info@creative-biomart.com](mailto:info@creative-biomart.com)  Fax: 1-631-938-8127

 45-1 Ramsey Road, Shirley, NY 11967, USA

GELSGDFEKLMLAVVKCIRSTPEYFAERLFKAMKGLGTRDNTLIRIMVSRSELDMLDI  
 REIFRTKYEKSLYSMIKNDTSGEYKKTLLKLSGGDDDAAGQFFPEAAQVAYQMWEL  
 SAVARVELKGTVRPANDFNPDADAKALRKAMKGLGTDEDTIIDITHRSNVQRQQIRQ  
 TFKSHFGRDLMTDLKSEISGDLARLILGLMMPPAHYDAKQLKKAMEGAGTDEKALIEI  
 LATRTNAEIRAINAYKEDYHKSLEDALSSDTSGHFRRILISLATGHREEGGENLDQA  
 REDAQVAEILEIADTPSGDKTSLETRFMTILCTRSYPHLRRVVFQEFIKMTNYDVEHTI  
 KKEMSGDVRDAFVAIVQSVKNKPLFFADKLYKSMKGAGTDEKTLTRIMVSRSEIDLL  
 NIRREFIEKYDKSLHQAIEGDTSGDFLKALLALCGGED

**Applications** Enzyme-linked Immunoabsorbent Assay; Western Blot (Recombinant protein);  
 Antibody Production; Protein Array

**Notes** Best use within three months from the date of receipt of this protein.

**Storage** Store at -80 centigrade. Aliquot to avoid repeated freezing and thawing.

**Storage Buffer** 50 mM Tris-HCl, 10 mM reduced Glutathione, pH=8.0 in the elution buffer.

## GENE INFORMATION

**Gene Name** [ANXA6 annexin A6 \[ Homo sapiens \]](#)

**Official Symbol** [ANXA6](#)

**Synonyms** ANXA6; annexin A6; ANX6; p68; p70; CPB-II; annexin-6; calelectrin; lipocortin VI;  
 calphobindin II; calphobindin-II; chromobindin-20; annexin VI (p68); 67 kDa  
 calelectrin; calcium-binding protein p68; CBP68;

**Gene ID** [309](#)

**mRNA Refseq** [NM\\_001155](#)

 Tel: 1-631-559-9269 1-516-512-3133

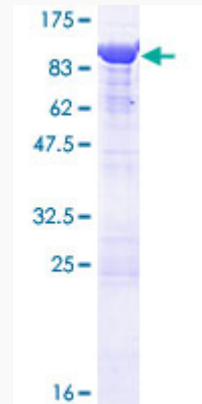
 Email: [info@creative-biomart.com](mailto:info@creative-biomart.com)  Fax: 1-631-938-8127

 45-1 Ramsey Road, Shirley, NY 11967, USA

**Protein Refseq** NP\_001146

**MIM** 114070

**UniProt ID** P08133



12.5% SDS-PAGE Stained with Coomassie Blue.

 Tel: 1-631-559-9269 1-516-512-3133

 Email: [info@creative-biomart.com](mailto:info@creative-biomart.com)  Fax: 1-631-938-8127

 45-1 Ramsey Road, Shirley, NY 11967, USA