

# Recombinant Human AP1B1 Protein, Myc/DDK-tagged, C13 and N15-labeled

**Cat. No.** AP1B1-1261H    **Lot. No.** (See product label)

## SPECIFICATION

<b>Product Overview</b>	AP1B1 MS Standard C13 and N15-labeled recombinant protein (NP_001118) with a C-terminal MYC/DDK tag, was expressed in HEK293 cells.
<b>Species</b>	Human
<b>Source</b>	HEK293
<b>Description</b>	Adaptor protein complex 1 is found at the cytoplasmic face of coated vesicles located at the Golgi complex, where it mediates both the recruitment of clathrin to the membrane and the recognition of sorting signals within the cytosolic tails of transmembrane receptors. This complex is a heterotetramer composed of two large, one medium, and one small adaptin subunit. The protein encoded by this gene serves as one of the large subunits of this complex and is a member of the adaptin protein family. This gene is a candidate meningioma gene. Alternative splicing results in multiple transcript variants.
<b>Molecular Mass</b>	104.6 kDa
<b>AA Sequence</b>	MTDSKYFTTTKKGEIFELKAELNSDKKEKKKEAVKKVIASMTVGKDVSAFPDVVNC MQTDNLELKKLVYLYLMNYAKSQPDMAIMAVNTFVKDCEDPNPLIRALAVRTMGCIR VDKITEYLCEPLRKCLKDEDPYVRKTAAVCVAKLHDINAQLVEDQGFLDTLKDLSDS NPMVVANAVAALSEIAESHPSNLLDLNPQSINKLLTALNECTEWGQIFILDCLANYM PKDDREAQSICERVTPRLSHANSVVLSAVKVLKFMEMLSKDLDYYGTLKLLAPP

 Tel: 1-631-559-9269    1-516-512-3133

 Email: [info@creative-biomart.com](mailto:info@creative-biomart.com)     Fax: 1-631-938-8127

 45-1 Ramsey Road, Shirley, NY 11967, USA

LVTLLSAEPELQYVALRNINLIVQKRPEILKHEMKVFFVKYNDPIYVKLEKLDIMIRLAS  
 QANIAQVLAELKEYATEVDVDFVRKAVRAIGRCAIKVEQSAERCVSTLLDLIQTKVNY  
 VVQEAIIVIKDIFRKYPNKYESVIATLCENLDSLDEPEARAAAMIWIVGEYAERIDNADE  
 LLESFLEGFHDESTQVQLQLLTAIVKLFKKTETQELVQQVLSLATQDSDNPDLRDR  
 GYIYWRLSTDPVAAKEVLAEKPLISEETDLIEPTLLDELICYIGTLASVYHKPPSAFV  
 EGGRGVVHKSLPPRTASSESAESPETAPTGAPPGEQPDVIPAQGDLLGDLLNLDLG  
 PPVSGPPLATSSVQMGAVDLLGGGLDSLMDGDEPEGIGGTNFVAPPTAAVPANLGAP  
 IGSGLSDFDLTSGVGTLSGSYVAPKAVWLPAMKAKGLEISGTFTRQVGSISMDLQL  
 TNKALQVMTDFAIQFNRSFGLAPAAPLQVHAPLSPNQTV EISLPLSTVGSVMKMEP  
 LNNLQVAVKNNIDVFYFSTLYPLHILFVEDGKMDRQMFLATWKDIPNENEAQFQIRD  
 CPLNAEAASSKLQSSNIFTVAKRNVEGQDMLYQSLKLTNGIWWLAELRIQPGNPSCT  
 DLELSLKCRAPEVSQHVIYQAYETILKNTRTRPLEQKLISEEDLAANDILDYKDDDDKV

**Purity** > 80% as determined by SDS-PAGE and Coomassie blue staining

**Stability** Stable for 3 months from receipt of products under proper storage and handling conditions.

**Storage** Store at -80 centigrade. Avoid repeated freeze-thaw cycles.

**Concentration** 50 µg/mL as determined by BCA

**Storage Buffer** 100 mM glycine, 25 mM Tris-HCl, pH 7.3.

## GENE INFORMATION

**Gene Name** AP1B1 adaptor related protein complex 1 subunit beta 1 [ Homo sapiens (human) ]

**Official Symbol** AP1B1

**Synonyms** AP1B1; adaptor-related protein complex 1, beta 1 subunit; ADTB1, CLAPB2; AP-1

 Tel: 1-631-559-9269 1-516-512-3133

 Email: [info@creative-biomart.com](mailto:info@creative-biomart.com)  Fax: 1-631-938-8127

 45-1 Ramsey Road, Shirley, NY 11967, USA

complex subunit beta-1; AP105A; BAM22; beta1-adaptin; beta-1-adaptin; beta-adaptin 1; beta-prime-adaptin; Golgi adaptor HA1/AP1 adaptin beta subunit; adaptor protein complex AP-1 subunit beta-1; adapter-related protein complex 1 subunit beta-1; clathrin assembly protein complex 1 beta large chain; plasma membrane adaptor HA2/AP2 adaptor beta subunit; ADTB1; CLAPB2;

**Gene ID** [162](#)

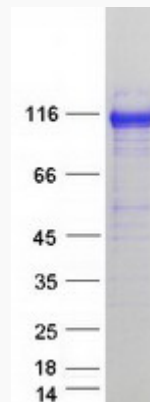
**mRNA Refseq** [NM\\_001127](#)

**Protein Refseq** [NP\\_001118](#)

**MIM** [600157](#)

**UniProt ID** [Q10567](#)

**SDS-PAGE**



 Tel: 1-631-559-9269 1-516-512-3133

 Email: [info@creative-biomart.com](mailto:info@creative-biomart.com)  Fax: 1-631-938-8127

 45-1 Ramsey Road, Shirley, NY 11967, USA