

Recombinant Human AP1B1 protein, GST-tagged

Cat. No. AP1B1-644H **Lot. No.** (See product label)

SPECIFICATION

Product Overview	Human AP1B1 full-length ORF (CAK54367.1, 1 a.a. - 939 a.a.) recombinant protein with GST-tag at N-terminal.
Species	Human
Source	Wheat Germ
Description	Adaptor protein complex 1 is found at the cytoplasmic face of coated vesicles located at the Golgi complex, where it mediates both the recruitment of clathrin to the membrane and the recognition of sorting signals within the cytosolic tails of transmembrane receptors. This complex is a heterotetramer composed of two large, one medium, and one small adaptin subunit. The protein encoded by this gene serves as one of the large subunits of this complex and is a member of the adaptin protein family. This gene is a candidate meningioma gene. Alternative splicing results in multiple transcript variants. [provided by RefSeq, Oct 2009]
Molecular Mass	129.69 kDa
AA Sequence	MTDSKYFTTTKKGEIFELKAELNSDKKEKKKEAVKKVIASMTVGKDVSA LFPD VVNC MQTDNLELKKLVYLYLMNYAKSQPDMAIMAVNTFVKDCEDPNPLIRALAVRTMGCIR VDKITEYLCEPLRKCLKDEDPYVRKTAAVCVAKLHDINAQLVEDQGFLDTLKD LISDS NPMVVANAVAALSEIAESH PSSNLLDLNPQSINKLLTALNECTEWGQIFILDCLANYM PKDDREAQSICERVTPRLSHANSVVLSAVKVLKFMEMLSKDLDYGYGTLKKLAPP LVTLLSAEPELQYVALRNINLIVQKRPEILKHEMKVFFVKYNDPIYVKLEKLDIMIRLAS

 Tel: 1-631-559-9269 1-516-512-3133

 Email: info@creative-biomart.com  Fax: 1-631-938-8127

 45-1 Ramsey Road, Shirley, NY 11967, USA

QANIAQVLAELKEYATEVDVDFVRKAVRAIGRCAIKVEQSAERCVSTLLDLIQTQKVN
 VVQEAIIVIKDIFRKYPNKYESVIATLCENLDSLDEPEARAAMIWIVGEYAERIDNAE
 LLESFLEGFHDESTQVQLQLLTAIVKLFKKTETQELVQQVLSLATQDSDNPDLRDR
 GYIYWRLSTDPVAAKEVLAEKPLISEETDLIEPTLLDELICYIGTLASVYHKPPSAFV
 EGGRGVVHKSLLPRTASSESAESPETAPTGAPPGEQPDVIPAQQDLLGDLNLDLG
 PPVSGPPLATSSVQMGAVDLLGGGLDSLIGGTNFVAPPTAAVPANLGAFIGSGLSDL
 FDLTSGVGTLSGSYVAPKAVWLPAMKAKGLEISGTFTRQVGSISMDLQLTNKALQV
 MTDFAIQFNRSFGLAPAAPLQVHAPLSPNQTVESLPLSTVGSVMKMEPLNNLQVA
 VKNNIDVFYFSTLYPLHILFVEDGKMDRQMFLATWKDIPNENEAQFQIRDCPLNAEAA
 SSKLQSSNIFTVAKRNVEGQDMLYQSLKLTNGIWWLAELRIQPGNPSCTLSLKCRAP
 EVSQHVYQAYETILKN

Applications

Enzyme-linked Immunoabsorbent Assay; Western Blot (Recombinant protein);
 Antibody Production; Protein Array

Notes

Best use within three months from the date of receipt of this protein.

Storage

Store at -80 centigrade. Aliquot to avoid repeated freezing and thawing.

Storage Buffer

50 mM Tris-HCl, 10 mM reduced Glutathione, pH=8.0 in the elution buffer.

GENE INFORMATION

Gene Name

AP1B1 adaptor-related protein complex 1, beta 1 subunit [Homo sapiens]

Official Symbol

AP1B1

Synonyms

AP1B1; adaptor-related protein complex 1, beta 1 subunit; ADTB1, CLAPB2; AP-1 complex subunit beta-1; AP105A; BAM22; beta1-adaptin; beta-1-adaptin; beta-adaptin 1; beta-prime-adaptin; Golgi adaptor HA1/AP1 adaptin beta subunit; adaptor protein complex AP-1 subunit beta-1; adapter-related protein complex 1 subunit beta-

 Tel: 1-631-559-9269 1-516-512-3133

 Email: info@creative-biomart.com  Fax: 1-631-938-8127

 45-1 Ramsey Road, Shirley, NY 11967, USA

1; clathrin assembly protein complex 1 beta large chain; plasma membrane adaptor HA2/AP2 adaptor beta subunit; ADTB1; CLAPB2;

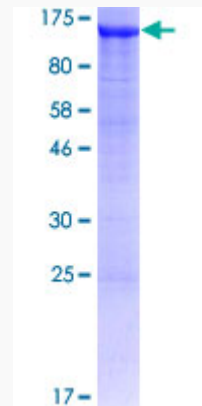
Gene ID 162

mRNA Refseq NM_001127

Protein Refseq NP_001118

MIM 600157

UniProt ID Q10567



12.5% SDS-PAGE Stained with Coomassie Blue.

 Tel: 1-631-559-9269 1-516-512-3133

 Email: info@creative-biomart.com  Fax: 1-631-938-8127

 45-1 Ramsey Road, Shirley, NY 11967, USA