

# Recombinant Human AP1G1 Protein, Myc/DDK-tagged, C13 and N15-labeled

**Cat. No.** AP1G1-1148H    **Lot. No.** (See product label)

## SPECIFICATION

<b>Product Overview</b>	AP1G1 MS Standard C13 and N15-labeled recombinant protein (NP_001025178) with a C-terminal MYC/DDK tag, was expressed in HEK293 cells.
<b>Species</b>	Human
<b>Source</b>	HEK293
<b>Description</b>	<p>Adaptins are important components of clathrin-coated vesicles transporting ligand-receptor complexes from the plasma membrane or from the trans-Golgi network to lysosomes. The adaptin family of proteins is composed of four classes of molecules named alpha, beta-, beta prime- and gamma- adaptins. Adaptins, together with medium and small subunits, form a heterotetrameric complex called an adaptor, whose role is to promote the formation of clathrin-coated pits and vesicles. The protein encoded by this gene is a gamma-adaptin protein and it belongs to the adaptor complexes large subunits family. Two transcript variants encoding different isoforms have been found for this gene.</p>
<b>Molecular Mass</b>	91.5 kDa
<b>AA Sequence</b>	<p>MPAPIRLRELIRTIRTARTQAEEREMIQKECAAIRSSFREEDNTYRCRNVAKLLYMHM            LGYPAHFGQLECFKLIASQKFTDKRIGYLGAMLLLDERQDVHLLMTNCIKNDLNHST            QFVQGLALCTLGCMGSSEMCRDLAGEVEKLLKTSNSYLRKKAALCAVHVIRKVPPEL            MEMFLPATKNLLNEKNHGVLHTSVVLLTEMCERSPDMLAHFRKNEKLVLPQLVRILKN</p>

 Tel: 1-631-559-9269    1-516-512-3133

 Email: [info@creative-biomart.com](mailto:info@creative-biomart.com)     Fax: 1-631-938-8127

 45-1 Ramsey Road, Shirley, NY 11967, USA

LIMSGYSPEHDVSGISDPFLQVRILRLLRILGRNDDDSSEAMNDILAQVATNTETSKN  
 VGNAILYETVLTIMDIKSEGLRVLAINILGRFLLNNDKNIRYVALTSLKTVQTDHNAV  
 QRHRSTIVDCLKDLDVSIKRRAMELSFALVNGNNIRGMMKELLYFLDSCEPEFKADC  
 ASGIFLAAEKYAPSKRWHIDTIMRVLTAGSYVRDDAVPNLIQLITNSVEMHAYTVQR  
 LYKAILGDYSQQPLVQVAAWCIGEYGDLLVSGQCEEEEEPIQVTEDEVLDILESVLISN  
 MSTSVTRGYALTAIMKLSTRFTCTVNRICKVVSIVYGSSIDVELQQRAVEYNALFKKYD  
 HMRSALLERMPVMEKVTTNGPTEIVQTNGETEPAPLETKPPPSGPQPTSQANDLLD  
 LLGGNDITPVIPTAPTSKPSSAGGELLDLLGDINLTGAPAAAPAPASVPQISQPPFLLD  
 GLSSQPLFNDIAAGIPSITAYSKNGLKIEFTFERSNTNPSVTVITIQASNSTELDMTDFV  
 FQAAVPKTFQLQLLSPSSSIVPAFNTGTITQVIKVLNPQKQQLRMRIKLTYNHKGSAM  
 QDLAEVNNFPPQSWQTRTRPLEQKLISEEDLAANDILDYKDDDDKV

**Purity** > 80% as determined by SDS-PAGE and Coomassie blue staining

**Stability** Stable for 3 months from receipt of products under proper storage and handling conditions.

**Storage** Store at -80 centigrade. Avoid repeated freeze-thaw cycles.

**Concentration** 50 µg/mL as determined by BCA

**Storage Buffer** 100 mM glycine, 25 mM Tris-HCl, pH 7.3.

## GENE INFORMATION

**Gene Name** AP1G1 adaptor related protein complex 1 subunit gamma 1 [ Homo sapiens (human) ]

**Official Symbol** AP1G1

**Synonyms** AP1G1; adaptor-related protein complex 1, gamma 1 subunit; ADTG, CLAPG1; AP-1

 Tel: 1-631-559-9269 1-516-512-3133

 Email: [info@creative-biomart.com](mailto:info@creative-biomart.com)  Fax: 1-631-938-8127

 45-1 Ramsey Road, Shirley, NY 11967, USA

complex subunit gamma-1; gamma1 adaptin; gamma adaptin; gamma1-adaptin; golgi adaptor HA1/AP1 adaptin gamma subunit; adaptor protein complex AP-1 subunit gamma-1; golgi adaptor HA1/AP1 adaptin subunit gamma-1; adapter-related protein complex 1 subunit gamma-1; clathrin assembly protein complex 1 gamma large chain; clathrin assembly protein complex 1 gamma-1 large chain; clathrin-associated/assembly/adaptor protein, large, gamma 1; ADTG; CLAPG1; MGC18255;

**Gene ID** 164

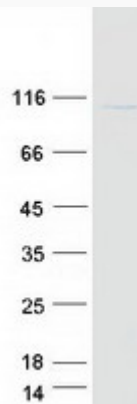
**mRNA Refseq** [NM\\_001030007](#)

**Protein Refseq** [NP\\_001025178](#)

**MIM** 603533

**UniProt ID** [O43747](#)

**SDS-PAGE**



 Tel: 1-631-559-9269 1-516-512-3133

 Email: [info@creative-biomart.com](mailto:info@creative-biomart.com)  Fax: 1-631-938-8127

 45-1 Ramsey Road, Shirley, NY 11967, USA