

Recombinant Human AP1G2 protein, GST-tagged

Cat. No. AP1G2-645H Lot. No. (See product label)

SPECIFICATION

| | |
|-------------------------|---|
| Product Overview | Human AP1G2 partial ORF (NP_003908, 686 a.a. - 785 a.a.) recombinant protein with GST-tag at N-terminal. |
| Species | Human |
| Source | Wheat Germ |
| Description | <p>Adaptins are important components of clathrin-coated vesicles transporting ligand-receptor complexes from the plasma membrane or from the trans-Golgi network to lysosomes. The adaptin family of proteins is composed of four classes of molecules named alpha, beta-, beta prime- and gamma- adaptins. Adaptins, together with medium and small subunits, form a heterotetrameric complex called an adaptor, whose role is to promote the formation of clathrin-coated pits and vesicles. The protein encoded by this gene is a gamma-adaptin protein and it belongs to the adaptor complexes large subunits family. This protein along with the complex is thought to function at some trafficking step in the complex pathways between the trans-Golgi network and the cell surface. Several alternatively spliced transcript variants of this gene exist, but their full-length nature is not known. [provided by RefSeq, Aug 2</p> |
| Molecular Mass | 36.74 kDa |
| AA Sequence | RPPENPALLLITITATNFSEGDVTHFICQAAVPKSLQLQLQAPSGNTVPARGGLPITQL FRILNPNKAPLRLKLRLTYDHFHQSVQEIFEVNNLPVESWQ |

 Tel: 1-631-559-9269 1-516-512-3133

 Email: info@creative-biomart.com  Fax: 1-631-938-8127

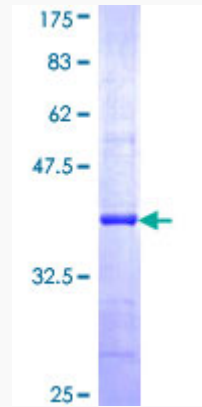
 45-1 Ramsey Road, Shirley, NY 11967, USA

| | |
|-------------------------|--|
| Applications | Enzyme-linked Immunoabsorbent Assay; Western Blot (Recombinant protein); Antibody Production; Protein Array |
| Notes | Best use within three months from the date of receipt of this protein. |
| Storage | Store at -80 centigrade. Aliquot to avoid repeated freezing and thawing. |
| Storage Buffer | 50 mM Tris-HCl, 10 mM reduced Glutathione, pH=8.0 in the elution buffer. |
| GENE INFORMATION | |
| Gene Name | AP1G2 adaptor related protein complex 1 gamma 2 subunit [Homo sapiens (human)] |
| Official Symbol | AP1G2 |
| Synonyms | AP1G2 adaptor related protein complex 1 gamma 2 subunit; G2AD; AP-1 complex subunit gamma-like 2; clathrin-associated/assembly/adaptor protein, large, gamma-2; gamma2-adaptin |
| Gene ID | 8906 |
| mRNA Refseq | NM_001282474 |
| Protein Refseq | NP_001269403 |
| MIM | 603534 |
| UniProt ID | O75843 |

 Tel: 1-631-559-9269 1-516-512-3133

 Email: info@creative-biomart.com  Fax: 1-631-938-8127

 45-1 Ramsey Road, Shirley, NY 11967, USA



12.5% SDS-PAGE Stained with Coomassie Blue.

Tel: 1-631-559-9269 1-516-512-3133

Email: info@creative-biomart.com Fax: 1-631-938-8127

45-1 Ramsey Road, Shirley, NY 11967, USA