

Recombinant Human AP1M1 Protein (Met1-Pro258), N-His-tagged

Cat. No. AP1M1-0462H Lot. No. (See product label)

SPECIFICATION

Product Overview	Recombinant human AP1M1 (Met1-Pro258) was fused with the N-His tag and was expressed in E. coli.
Species	Human
Source	E.coli
ProteinLength	Met1-Pro258
Form	Lyophilized powder/frozen liquid
Molecular Mass	31.81 kDa
Purity	>90% as determined by SDS-PAGE
Notes	For research use only.
Storage	Use a manual defrost freezer and avoid repeated freeze thaw cycles. Store at 2 to 8 centigrade for one week. Store at -20 to -80 centigrade for twelve months from the date of receipt.
Storage Buffer	0.01M PBS, pH 7.4, 0.02% NLS
Reconstitution	Reconstitute in sterile water for a stock solution.

 Tel: 1-631-559-9269 1-516-512-3133

 Email: info@creative-biomart.com  Fax: 1-631-938-8127

 45-1 Ramsey Road, Shirley, NY 11967, USA

Shipping They are shipped out with dry ice/blue ice unless customers require otherwise.

GENE INFORMATION

Gene Name AP1M1 adaptor-related protein complex 1, mu 1 subunit [Homo sapiens (human)]

Official Symbol AP1M1

Synonyms

AP1M1; adaptor-related protein complex 1, mu 1 subunit; AP-1 complex subunit mu-1; AP47; CLAPM2; mu-adaptin 1; mu1A-adaptin; HA1 47 kDa subunit; clathrin adaptor protein AP47; AP-mu chain family member mu1A; golgi adaptor AP-1 47 kDa protein; clathrin coat assembly protein AP47; clathrin coat-associated protein AP47; adaptor protein complex AP-1 mu-1 subunit; golgi adaptor HA1/AP1 adaptin mu-1 subunit; adaptor-related protein complex 1 mu-1 subunit; clathrin assembly protein complex 1, medium chain; clathrin assembly protein complex AP1, mu subunit; clathrin assembly protein complex 1 medium chain 1; CLTNM; MU-1A;

Gene ID 8907

mRNA Refseq NM_001130524

Protein Refseq NP_001123996

MIM 603535

UniProt ID Q9BXS5

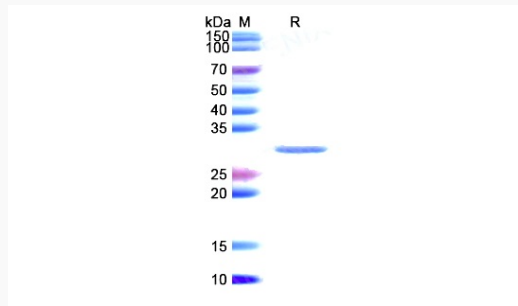
 Tel: 1-631-559-9269 1-516-512-3133

 Email: info@creative-biomart.com  Fax: 1-631-938-8127

 45-1 Ramsey Road, Shirley, NY 11967, USA



SDS-PAGE



Tel: 1-631-559-9269 1-516-512-3133

Email: info@creative-biomart.com Fax: 1-631-938-8127

45-1 Ramsey Road, Shirley, NY 11967, USA