

Recombinant Human AP1M1 Protein, His-tagged

Cat. No. AP1M1-182H Lot. No. (See product label)

SPECIFICATION

Product Overview	Recombinant Human AP1M1 Protein (Ser2-Pro258) with N-His tag was expressed in E. coli.
Species	Human
Source	E.coli
ProteinLength	Ser2-Pro258
Description	The protein encoded by this gene is the medium chain of the trans-Golgi network clathrin-associated protein complex AP-1. The other components of this complex are beta-prime-adaptin, gamma-adaptin, and the small chain AP1S1. This complex is located at the Golgi vesicle and links clathrin to receptors in coated vesicles. These vesicles are involved in endocytosis and Golgi processing. Alternatively spliced transcript variants encoding distinct protein isoforms have been found for this gene.
Form	Freeze-dried powder
Molecular Mass	Predicted Molecular Mass: 33.1 kDa Accurate Molecular Mass: 32 kDa
Purity	> 95%
Applications	Positive Control; Immunogen; SDS-PAGE; WB.

 Tel: 1-631-559-9269 1-516-512-3133

 Email: info@creative-biomart.com  Fax: 1-631-938-8127

 45-1 Ramsey Road, Shirley, NY 11967, USA

Stability	The thermal stability is described by the loss rate. The loss rate was determined by accelerated thermal degradation test, that is, incubate the protein at 37 centigrade for 48h, and no obvious degradation and precipitation were observed. The loss rate is less than 5% within the expiration date under appropriate storage condition.
Storage	Avoid repeated freeze/thaw cycles. Store at 2-8 centigrade for one month. Aliquot and store at -80 centigrade for 12 months.
Storage Buffer	20mM Tris, 150mM NaCl, pH8.0, containing 1mM EDTA, 1mM DTT, 0.01% SKL, 5% Trehalose and Proclin300.
Reconstitution	Reconstitute in sterile water to a concentration of 0.1-1.0 mg/mL. Do not vortex.
GENE INFORMATION	
Gene Name	AP1M1 adaptor-related protein complex 1, mu 1 subunit [Homo sapiens (human)]
Official Symbol	AP1M1
Synonyms	AP1M1; adaptor-related protein complex 1, mu 1 subunit; AP-1 complex subunit mu-1; AP47; CLAPM2; mu-adaptin 1; mu1A-adaptin; HA1 47 kDa subunit; clathrin adaptor protein AP47; AP-mu chain family member mu1A; golgi adaptor AP-1 47 kDa protein; clathrin coat assembly protein AP47; clathrin coat-associated protein AP47; adaptor protein complex AP-1 mu-1 subunit; golgi adaptor HA1/AP1 adaptin mu-1 subunit; adaptor-related protein complex 1 mu-1 subunit; clathrin assembly protein complex 1, medium chain; clathrin assembly protein complex AP1, mu subunit; clathrin assembly protein complex 1 medium chain 1; CLTNM; MU-1A
Gene ID	8907
mRNA Refseq	NM_001130524

 Tel: 1-631-559-9269 1-516-512-3133

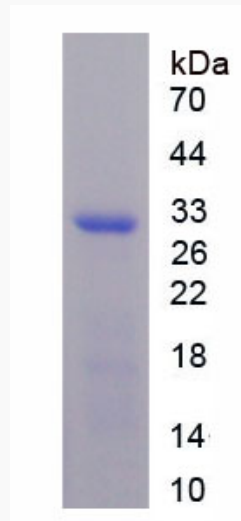
 Email: info@creative-biomart.com  Fax: 1-631-938-8127

 45-1 Ramsey Road, Shirley, NY 11967, USA

Protein Refseq NP_001123996

MIM 603535

UniProt ID Q9BXS5



 Tel: 1-631-559-9269 1-516-512-3133

 Email: info@creative-biomart.com  Fax: 1-631-938-8127

 45-1 Ramsey Road, Shirley, NY 11967, USA