

Recombinant Human AP1S2 protein, GST-tagged

Cat. No. AP1S2-650H **Lot. No.** (See product label)

SPECIFICATION

Product Overview	Human AP1S2 full-length ORF (AAH01117, 1 a.a. - 157 a.a.) recombinant protein with GST-tag at N-terminal.
Species	Human
Source	Wheat Germ
Description	<p>Adaptor protein complex 1 is found at the cytoplasmic face of coated vesicles located at the Golgi complex, where it mediates both the recruitment of clathrin to the membrane and the recognition of sorting signals within the cytosolic tails of transmembrane receptors. This complex is a heterotetramer composed of two large, one medium, and one small adaptin subunit. The protein encoded by this gene serves as the small subunit of this complex and is a member of the adaptin protein family. Transcript variants encoding different isoforms have been found for this gene. [provided by RefSeq, Jan 2013]</p>
Molecular Mass	43.01 kDa
AA Sequence	<p>MQFMLLSRQGKLRRLQKWYVPLSDKEKKKITRELVQTVLARKPKMCSFLEWRDLKIV YKRYASLYFCCAIEDQDNELITLEIIHRYVELLDKYFGSVCELDIIFNFEKAYFILDEFLL GGEVQETSKKNVLKAIEQADLLQEEAETPRSVLEEIGLT</p>
Applications	Enzyme-linked Immunoabsorbent Assay; Western Blot (Recombinant protein); Antibody Production; Protein Array

 Tel: 1-631-559-9269 1-516-512-3133

 Email: info@creative-biomart.com  Fax: 1-631-938-8127

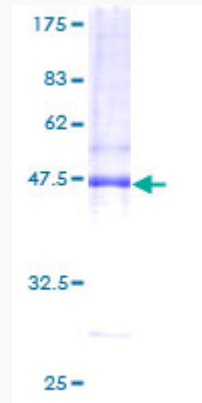
 45-1 Ramsey Road, Shirley, NY 11967, USA

Notes	Best use within three months from the date of receipt of this protein.
Storage	Store at -80 centigrade. Aliquot to avoid repeated freezing and thawing.
Storage Buffer	50 mM Tris-HCl, 10 mM reduced Glutathione, pH=8.0 in the elution buffer.
GENE INFORMATION	
Gene Name	AP1S2 adaptor-related protein complex 1, sigma 2 subunit [Homo sapiens]
Official Symbol	AP1S2
Synonyms	AP1S2; adaptor-related protein complex 1, sigma 2 subunit; mental retardation, X linked 59 , MRX59; AP-1 complex subunit sigma-2; SIGMA1B; sigma1B-adaptin; sigma-adaptin 1B; sigma 1B subunit of AP-1 clathrin; adaptor protein complex AP-1 sigma-1B subunit; clathrin adaptor complex AP1 sigma 1B subunit; golgi adaptor HA1/AP1 adaptin sigma 1B subunit; golgi adaptor HA1/AP1 adaptin sigma-1B subunit; adapter-related protein complex 1 sigma-1B subunit; clathrin assembly protein complex 1 sigma-1B small chain; DC22; MRX59; MRXSF; MRXS21; MGC:1902;
Gene ID	8905
mRNA Refseq	NM_003916
Protein Refseq	NP_003907
MIM	300629
UniProt ID	P56377

 Tel: 1-631-559-9269 1-516-512-3133

 Email: info@creative-biomart.com  Fax: 1-631-938-8127

 45-1 Ramsey Road, Shirley, NY 11967, USA



12.5% SDS-PAGE Stained with Coomassie Blue.

 Tel: 1-631-559-9269 1-516-512-3133

 Email: info@creative-biomart.com  Fax: 1-631-938-8127

 45-1 Ramsey Road, Shirley, NY 11967, USA