

Recombinant Human AP1S2 protein, GST-tagged

Cat. No. AP1S2-7844H Lot. No. (See product label)

SPECIFICATION

| | |
|-------------------------|--|
| Product Overview | Recombinant Human AP1S2 protein(1-157 aa), fused with N-terminal GST tag, was expressed in E.coli. |
| Species | Human |
| Source | E.coli |
| ProteinLength | 1-157 aa |
| Form | The purified protein was lyophilized from sterile phosphate-buffered saline (PBS: 58 mM Na ₂ HPO ₄ , 17 mM NaH ₂ PO ₄ , 68 mM NaCl, pH 8.0). Prior to lyophilization, 5% (w/v) trehalose and 5% (w/v) mannitol were incorporated as cryoprotective excipients. |
| AASequence | MQFMLLFSRQGKLRRLQKWYVPLSDKEKKKITRELVQTVLARKPKMCSFLEWRDLKIV YKRYASLYFCCAIEDQDNELITLEIIHRYVELLDKYFGSVCELDIIFNFEKAYFILDEFLL GGEVQETSKKNVLKAIEQADLLQEEAETPRSVLEEIGLT |
| Purity | 90%, by SDS-PAGE with Coomassie Brilliant Blue staining. |
| Storage | Store at 2-8°C for 1-2 weeks. Aliquot and store at -20°C to -80°C for up to 3 months, reconstitution with sterile water and addition of an equal volume of glycerol. Avoid repeat freeze-thaw cycles. |
| Reconstitution | Dissolve the product in 200 µl sterile water to achieve a working concentration of 0.25 |

 Tel: 1-631-559-9269 1-516-512-3133

 Email: info@creative-biomart.com  Fax: 1-631-938-8127

 45-1 Ramsey Road, Shirley, NY 11967, USA

g/μl. If experimental compatibility allows, mix the aqueous solution with an equal volume of glycerol (1:1 ratio) after initial reconstitution.

GENE INFORMATION

Gene Name [AP1S2 adaptor-related protein complex 1, sigma 2 subunit \[Homo sapiens \]](#)

Official Symbol [AP1S2](#)

Synonyms

AP1S2; adaptor-related protein complex 1, sigma 2 subunit; mental retardation, X linked 59 , MRX59; AP-1 complex subunit sigma-2; SIGMA1B; sigma1B-adaptin; sigma-adaptin 1B; sigma 1B subunit of AP-1 clathrin; adaptor protein complex AP-1 sigma-1B subunit; clathrin adaptor complex AP1 sigma 1B subunit; golgi adaptor HA1/AP1 adaptin sigma 1B subunit; golgi adaptor HA1/AP1 adaptin sigma-1B subunit; adapter-related protein complex 1 sigma-1B subunit; clathrin assembly protein complex 1 sigma-1B small chain; DC22; MRX59; MRXSF; MRXS21; MGC:1902;

Gene ID [8905](#)

mRNA Refseq [NM_003916](#)

Protein Refseq [NP_003907](#)

MIM [300629](#)

UniProt ID [P56377](#)

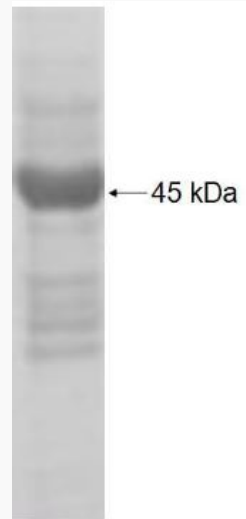
 Tel: 1-631-559-9269 1-516-512-3133

 Email: info@creative-biomart.com  Fax: 1-631-938-8127

 45-1 Ramsey Road, Shirley, NY 11967, USA



SDS-PAGE



Tel: 1-631-559-9269 1-516-512-3133

Email: info@creative-biomart.com Fax: 1-631-938-8127

45-1 Ramsey Road, Shirley, NY 11967, USA