

## Recombinant Human AP2A1 protein, GST-tagged

**Cat. No.** AP2A1-651H    **Lot. No.** (See product label)

### SPECIFICATION

<b>Product Overview</b>	Human AP2A1 partial ORF ( NP_055018, 824 a.a. - 923 a.a.) recombinant protein with GST-tag at N-terminal.
<b>Species</b>	Human
<b>Source</b>	Wheat Germ
<b>Description</b>	This gene encodes the alpha 1 adaptin subunit of the adaptor protein 2 (AP-2) complex found in clathrin coated vesicles. The AP-2 complex is a heterotetramer consisting of two large adaptins (alpha or beta), a medium adaptin (mu), and a small adaptin (sigma). The complex is part of the protein coat on the cytoplasmic face of coated vesicles which links clathrin to receptors in vesicles. Alternative splicing of this gene results in two transcript variants encoding two different isoforms. A third transcript variant has been described, but its full length nature has not been determined. [provided by RefSeq, Jul 2008]
<b>Molecular Mass</b>	36.74 kDa
<b>AA Sequence</b>	QVLNIECLRDFLTPPLLSVRFYGGAPQALTLKLPVTINKFFQPTEMAAQDFFQRWK QLSLPQQEAQKIFKANHPMDAEVTKAKLLGFGSALLDNVDPNP
<b>Applications</b>	Enzyme-linked Immunoabsorbent Assay; Western Blot (Recombinant protein); Antibody Production; Protein Array
<b>Notes</b>	Best use within three months from the date of receipt of this protein.

 Tel: 1-631-559-9269    1-516-512-3133

 Email: [info@creative-biomart.com](mailto:info@creative-biomart.com)     Fax: 1-631-938-8127

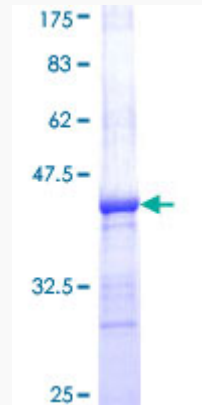
 45-1 Ramsey Road, Shirley, NY 11967, USA

<b>Storage</b>	Store at -80 centigrade. Aliquot to avoid repeated freezing and thawing.
<b>Storage Buffer</b>	50 mM Tris-HCl, 10 mM reduced Glutathione, pH=8.0 in the elution buffer.
<b>GENE INFORMATION</b>	
<b>Gene Name</b>	AP2A1 adaptor-related protein complex 2, alpha 1 subunit [ Homo sapiens ]
<b>Official Symbol</b>	AP2A1
<b>Synonyms</b>	AP2A1; adaptor-related protein complex 2, alpha 1 subunit; ADTAA, CLAPA1; AP-2 complex subunit alpha-1; alpha1-adaptin; alpha-adaptin A; adaptin, alpha A; 100 kDa coated vesicle protein A; adaptor protein complex AP-2 subunit alpha-1; adapter-related protein complex 2 alpha-1 subunit; clathrin assembly protein complex 2 alpha-A large chain; plasma membrane adaptor HA2/AP2 adaptin alpha A subunit; clathrin-associated/assembly/adaptor protein, large, alpha 1; ADTAA; CLAPA1; AP2-ALPHA;
<b>Gene ID</b>	160
<b>mRNA Refseq</b>	NM_014203
<b>Protein Refseq</b>	NP_055018
<b>MIM</b>	601026
<b>UniProt ID</b>	O95782

 Tel: 1-631-559-9269 1-516-512-3133

 Email: [info@creative-biomart.com](mailto:info@creative-biomart.com)  Fax: 1-631-938-8127

 45-1 Ramsey Road, Shirley, NY 11967, USA



12.5% SDS-PAGE Stained with Coomassie Blue.

 Tel: 1-631-559-9269 1-516-512-3133

 Email: [info@creative-biomart.com](mailto:info@creative-biomart.com)  Fax: 1-631-938-8127

 45-1 Ramsey Road, Shirley, NY 11967, USA