

# Recombinant Full Length Human AP2B1 Protein, C-Flag-tagged

**Cat. No.** AP2B1-476HFL    **Lot. No.** (See product label)

## SPECIFICATION

<b>Product Overview</b>	Recombinant Full Length Human AP2B1 Protein, fused to Flag-tag at C-terminus, was expressed in Mammalian cells.
<b>Species</b>	Human
<b>Source</b>	Mammalian Cells
<b>Description</b>	The protein encoded by this gene is one of two large chain components of the assembly protein complex 2, which serves to link clathrin to receptors in coated vesicles. The encoded protein is found on the cytoplasmic face of coated vesicles in the plasma membrane. Two transcript variants encoding different isoforms have been found for this gene.
<b>Form</b>	25 mM Tris HCl, pH 7.3, 100 mM glycine, 10% glycerol.
<b>Molecular Mass</b>	105.5 kDa
<b>AA Sequence</b>	MTDSKYFTTNKKGEIFELKAELNNEKKEKRKEAVKKVIAAMTVGKDVSSLFPDVVNC MQTDNLELKKLVY LYLMNYAKSQPDMAIMAVNSFVKDCEDPNPLIRALAVRTMGCI RVDKITEYLCEPLRKCLKDEDPYVRKT AAVCVAKLHDINAQMVEDQGFLDSLRLDIA DSNPMVVANAVAALSEISESHPNLNLLDLNPQNINKLLTA LNECTEWGQIFILDCLSN YNPKDDREAQSICERVTPRLSHANSVVLSAVKVLMKFLELLPKDSDYYNML LKKLA PPLVTLLSGEPEVQYVALRNINLIVQKRPEILKQEIKVFFVKYNDPIYVKLEKLDIMIRLA SQAN IAQVLAELKEYATEVDVDFVRKAVRAIGRCAIKVEQSAERCVSTLLDLIQTKVN

 Tel: 1-631-559-9269    1-516-512-3133

 Email: [info@creative-biomart.com](mailto:info@creative-biomart.com)     Fax: 1-631-938-8127

 45-1 Ramsey Road, Shirley, NY 11967, USA

YVVQEAIVVIRDIFRK YPNKYESIATLCENLDSLDEPDARAAMIWIVGEYAERIDNAD  
 ELLESFLEGFHDESTQVQLTLLTAIVK LFLKKPSETQELVQQVLSLATQDSDNPDLRD  
 RGYIYWRLSTDPVTAKEVVLSEKPLISEETDLIEPTLL DELICHIGSLASVYHKPPNA  
 FVEGSHGIHRKHLPIHHGSTDAGDSPVGTATTATNLEQPQVIPSQGDLLGD LLNLDLG  
 PPVNVQPQVSSMQMGAVDLLGGGLDSSLGSDLGGGIGGSPAVGQSFIPSSVPATFAP  
 SPTPAVV SSSLNDFELSTGIGMAPGGYVAPKAVWLPVAVKAKGLEISGTFTHRQGHI  
 YMEMNFTNKALQHMTDFAIQ FNKNSFGVIPSTPLAIHTPLMPNQSIDVSLPLNTLGPV  
 MKMEPLNNLQVAVKNNIDVFYFSCLIPLNVLF VEDGKMERQVFLATWKDIPNENELQ  
 FQIKECHLNADTVSSKLQNNNVYTIAKRNVEGQDMLYQSLKLTNG  
 IWILAELRIQPGNPNYTLKCRAPEVSQYIYQVYDSILKNTRTRPLEQKLISEEDLAA  
 NDILDYKDDDDKV

**Purity** > 80% as determined by SDS-PAGE and Coomassie blue staining.

**Stability** Stable for 12 months from the date of receipt of the product under proper storage and handling conditions. Avoid repeated freeze-thaw cycles.

**Storage** Store at -80 centigrade.

**Concentration** >50 ug/mL as determined by microplate BCA method.

**Preparation** Recombinant protein was captured through anti-DDK affinity column followed by conventional chromatography steps.

**Protein Families** Druggable Genome

**Protein Pathways** Endocytosis, Huntington's disease

**Full Length** Full L.

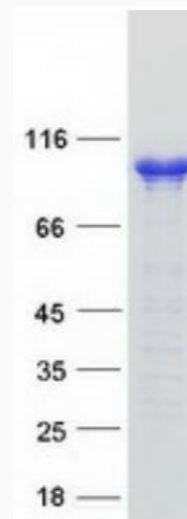
 Tel: 1-631-559-9269 1-516-512-3133

 Email: [info@creative-biomart.com](mailto:info@creative-biomart.com)  Fax: 1-631-938-8127

 45-1 Ramsey Road, Shirley, NY 11967, USA

## GENE INFORMATION

<b>Gene Name</b>	AP2B1 adaptor related protein complex 2 subunit beta 1 [ Homo sapiens (human) ]
<b>Official Symbol</b>	AP2B1
<b>Synonyms</b>	ADTB2; AP105B; CLAPB1; AP2-BETA
<b>Gene ID</b>	163
<b>mRNA Refseq</b>	NM_001030006.2
<b>Protein Refseq</b>	NP_001025177.1
<b>MIM</b>	601025
<b>UniProt ID</b>	P63010



 Tel: 1-631-559-9269 1-516-512-3133

 Email: [info@creative-biomart.com](mailto:info@creative-biomart.com)  Fax: 1-631-938-8127

 45-1 Ramsey Road, Shirley, NY 11967, USA



Coomassie blue staining of purified AP2B1 protein.

 Tel: 1-631-559-9269 1-516-512-3133

 Email: [info@creative-biomart.com](mailto:info@creative-biomart.com)  Fax: 1-631-938-8127

 45-1 Ramsey Road, Shirley, NY 11967, USA