

# Recombinant Human AP2B1 Protein, Myc/DDK-tagged, C13 and N15-labeled

**Cat. No.** AP2B1-6159H    **Lot. No.** (See product label)

## SPECIFICATION

<b>Product Overview</b>	AP2B1 MS Standard C13 and N15-labeled recombinant protein (NP_001273) with a C-terminal MYC/DDK tag, was expressed in HEK293 cells.
<b>Species</b>	Human
<b>Source</b>	HEK293
<b>Description</b>	The protein encoded by this gene is one of two large chain components of the assembly protein complex 2, which serves to link clathrin to receptors in coated vesicles. The encoded protein is found on the cytoplasmic face of coated vesicles in the plasma membrane. Two transcript variants encoding different isoforms have been found for this gene.
<b>Molecular Mass</b>	104.4 kDa
<b>AA Sequence</b>	<p>MTDSKYFTTNKKGEIFELKAELNNEKKEKRKEAVKKVIAAMTVGKDVSSLFPDVVNC  MQTDNLELKKLVYLYLMNYAKSQPDMAIMAVNSFVKDCEDPNPLIRALAVRTMGCIR  VDKITEYLCEPLRKCLKDEDPYVRKTAAVCVAKLHDINAQMVEDQGFLDSLRLDIADS  NPMVVANAVAALSEISESHPNLNLLDLNPQNINKLLTALNECTEWGQIFILDCLSNYN  PKDDREAQSICERVTPRLSHANSVVLSAVKVLKMFLELLPKDSYYNMLLKKLAPP  LVTLLSGEPEVQYVALRNINLIVQKRPEILKQEIKVFFVKYNDPIYVKLEKLDIMIRLASQ  ANIAQVLAELKEYATEVDVDFVRKAVRAIGRCAIKVEQSAERCVSTLLDLIQTKVNYV  VQEAIVVIRDIFRKYPNKYESIIATLCENLDSLDEPDARAAMIWIVGEYAERIDNADELL</p>

 Tel: 1-631-559-9269    1-516-512-3133

 Email: [info@creative-biomart.com](mailto:info@creative-biomart.com)     Fax: 1-631-938-8127

 45-1 Ramsey Road, Shirley, NY 11967, USA

ESFLEGFHDESTQVQLTLLTAIVKFLKPKSETQELVQQVLSLATQDSDNPDLRDRG  
 YIYWRLSTDPVTAKEVVLSEKPLISEETDLIEPTLLDELICHIGSLASVYHKPPNAFVE  
 GSHGIHRKHLPIHHGSTDAGDSPVGTATNLEQPQVIPSQGDLLGDLLNLDLGPV  
 NVPQVSSMQMGAVDLLGGGLDSLQSFIPSSVPATFAPSPTPAVVSSGLNDFEL  
 STGIGMAPGGYVAPKAVWLPVAVKAGLEISGTFTHRQGHYMEMNFTNKALQHMTD  
 FAIQFNKNSFGVIPSTPLAIHTPLMPNQSIDVSLPLNTLGPVMKMEPLNNLQVAVKNNI  
 DVFYFSCLIPLNVLFVEDGKMERQVFLATWKDIPNENELQFQIKECHLNADTVSSKLQ  
 NNNVYTIAKRNVEGQDMLYQSLKLTNGIWIWLAELRIQPGNPNYTSLKCRAPEVSQYI  
 YQVYDSILKNTRTRPLEQKLISEEDLAANDILDYKDDDDKV

**Purity** > 80% as determined by SDS-PAGE and Coomassie blue staining

**Stability** Stable for 3 months from receipt of products under proper storage and handling conditions.

**Storage** Store at -80 centigrade. Avoid repeated freeze-thaw cycles.

**Concentration** 50 µg/mL as determined by BCA

**Storage Buffer** 100 mM glycine, 25 mM Tris-HCl, pH 7.3.

## GENE INFORMATION

**Gene Name** AP2B1 adaptor related protein complex 2 subunit beta 1 [ Homo sapiens (human) ]

**Official Symbol** AP2B1

**Synonyms**

AP2B1; adaptor-related protein complex 2, beta 1 subunit; ADTB2, CLAPB1; AP-2 complex subunit beta; beta-adaptin; beta-2-adaptin; adaptin, beta 2 (beta); adaptor protein complex AP-2 subunit beta; adapter-related protein complex 2 beta subunit; clathrin assembly protein complex 2 beta large chain; plasma membrane adaptor

 Tel: 1-631-559-9269 1-516-512-3133

 Email: [info@creative-biomart.com](mailto:info@creative-biomart.com)  Fax: 1-631-938-8127

 45-1 Ramsey Road, Shirley, NY 11967, USA

HA2/AP2 adaptin beta subunit; clathrin-associated/assembly/adaptor protein, large, beta 1; ADTB2; AP105B; CLAPB1; AP2-BETA; DKFZp781K0743;

**Gene ID** 163

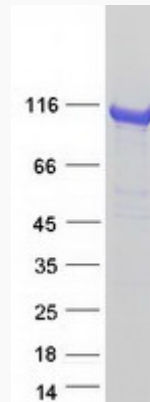
**mRNA Refseq** NM\_001282

**Protein Refseq** NP\_001273

**MIM** 601025

**UniProt ID** P63010

**SDS-PAGE**



 Tel: 1-631-559-9269 1-516-512-3133

 Email: [info@creative-biomart.com](mailto:info@creative-biomart.com)  Fax: 1-631-938-8127

 45-1 Ramsey Road, Shirley, NY 11967, USA