

Recombinant Human AP2M1 protein, His-tagged

Cat. No. AP2M1-1173H Lot. No. (See product label)

SPECIFICATION

Product Overview	Recombinant Human AP2M1 protein(Q96CW1)(1-435aa), fused to N-terminal His tag, was expressed in E. coli.
Species	Human
Source	E.coli
ProteinLength	1-435aa
Form	If the delivery form is liquid, the default storage buffer is Tris/PBS-based buffer, 5%-50% glycerol. If the delivery form is lyophilized powder, the buffer before lyophilization is Tris/PBS-based buffer, 6% Trehalose, pH 8.0.
Molecular Mass	53.7 kDa
Purity	Greater than 85% as determined by SDS-PAGE.
Storage	Store at -20°C/-80°C upon receipt, aliquoting is necessary for mutiple use. Avoid repeated freeze-thaw cycles.
Reconstitution	It is recommended that sterile water be added to the vial to prepare a stock solution of 0.2 ug/ul. Centrifuge the vial at 4°C before opening to recover the entire contents.

GENE INFORMATION

 Tel: 1-631-559-9269 1-516-512-3133

 Email: info@creative-biomart.com  Fax: 1-631-938-8127

 45-1 Ramsey Road, Shirley, NY 11967, USA

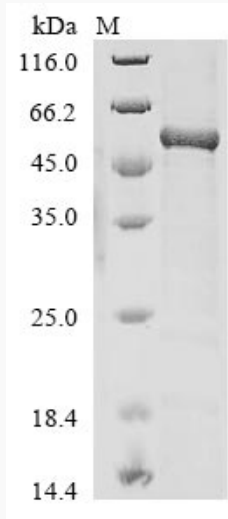
Gene Name	AP2M1 adaptor-related protein complex 2, mu 1 subunit [Homo sapiens]
Official Symbol	AP2M1
Synonyms	AP2M1; adaptor-related protein complex 2, mu 1 subunit; CLAPM1; AP-2 complex subunit mu; AP 2 mu 2 chain; AP50; clathrin adaptor complex AP2; mu subunit; clathrin assembly protein complex 2 medium chain; clathrin coat adaptor protein AP50; clathrin associated/assembly/adaptor protein; medium 1; HA2 50 kDa subunit; mu2; plasma membrane adaptor AP 2 50kDa protein; adaptin-mu2; AP-2 mu chain; AP-2 mu 2 chain; clathrin coat assembly protein AP50; clathrin coat-associated protein AP50; adaptor protein complex AP-2 subunit mu; clathrin adaptor complex AP2, mu subunit; plasma membrane adaptor AP-2 50kDa protein; plasma membrane adaptor AP-2 50 kDa protein; adapter-related protein complex 2 mu subunit; clathrin-associated/assembly/adaptor protein, medium 1;
Gene ID	1173
mRNA Refseq	NM_001025205
Protein Refseq	NP_001020376
MIM	601024
UniProt ID	Q96CW1

 Tel: 1-631-559-9269 1-516-512-3133

 Email: info@creative-biomart.com  Fax: 1-631-938-8127

 45-1 Ramsey Road, Shirley, NY 11967, USA

SDS-PAGE



 Tel: 1-631-559-9269 1-516-512-3133

 Email: info@creative-biomart.com  Fax: 1-631-938-8127

 45-1 Ramsey Road, Shirley, NY 11967, USA