

Recombinant Full Length Human AP2M1 Protein, C-Flag-tagged

Cat. No. AP2M1-1375HFL **Lot. No.** (See product label)

SPECIFICATION

Product Overview	Recombinant Full Length Human AP2M1 Protein, fused to Flag-tag at C-terminus, was expressed in Mammalian cells.
Species	Human
Source	Mammalian Cells
Description	This gene encodes a subunit of the heterotetrameric coat assembly protein complex 2 (AP2), which belongs to the adaptor complexes medium subunits family. The encoded protein is required for the activity of a vacuolar ATPase, which is responsible for proton pumping occurring in the acidification of endosomes and lysosomes. The encoded protein may also play an important role in regulating the intracellular trafficking and function of CTLA-4 protein. Three transcript variants encoding different isoforms have been found for this gene.
Form	25 mM Tris HCl, pH 7.3, 100 mM glycine, 10% glycerol.
Molecular Mass	49.2 kDa
AA Sequence	MIGGLFIYNHKGEVLISRVRDDIGRNAVD AFRVNVVIHARQQVRSPVTNIARTSFFHV KRSNIWLA AVTK QNVNAAMVFEFLYKMCDVMAAYFGKISEENIKNNFVLIYELLDEIL DFGY PQNSETGALKTFITQQGIKS QHQTKEEQSQITSQVTGQIGWRREGIKYRRNE LFLDVLESVNLLMSPQGQVLSAHVSGRVVMKSYLSGMP ECKFGMNDKIVIEKQGKG TADETSKSGKQSI AIDDCTFHQCVRLSKFDSERSISFIPPDGEFELMRYRRTT KDIILPF

 Tel: 1-631-559-9269 1-516-512-3133

 Email: info@creative-biomart.com  Fax: 1-631-938-8127

 45-1 Ramsey Road, Shirley, NY 11967, USA

RVIPLVREVGRTKLEVKVVIKSNFKPSLLAQKIEVRIPTPLNTSGVQVICMKGKAKYKA
 SENA IVWKIKRMAGMKESQISAEIELLPTNDKKKWARPPISMNFEVVPFAPSGLKVRY
 LKVFEPKLNYSDDHVIK
 WVRVYIGRSGIYETRCTRTRPLEQKLISEEDLAANDILDYKDDDDKV

Purity	> 80% as determined by SDS-PAGE and Coomassie blue staining.
Stability	Stable for 12 months from the date of receipt of the product under proper storage and handling conditions. Avoid repeated freeze-thaw cycles.
Storage	Store at -80 centigrade.
Concentration	>50 ug/mL as determined by microplate BCA method.
Preparation	Recombinant protein was captured through anti-DDK affinity column followed by conventional chromatography steps.
Protein Families	Druggable Genome
Protein Pathways	Endocytosis, Huntington's disease
Full Length	Full L.

GENE INFORMATION

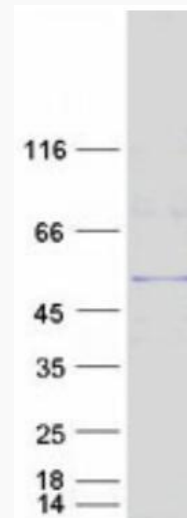
Gene Name	AP2M1 adaptor related protein complex 2 subunit mu 1 [Homo sapiens (human)]
Official Symbol	AP2M1
Synonyms	mu2; AP50; MRD60; CLAPM1

 Tel: 1-631-559-9269 1-516-512-3133

 Email: info@creative-biomart.com  Fax: 1-631-938-8127

 45-1 Ramsey Road, Shirley, NY 11967, USA

Gene ID	1173
mRNA Refseq	NM_001025205.2
Protein Refseq	NP_001020376.1
MIM	601024
UniProt ID	Q96CW1



Coomassie blue staining of purified AP2M1 protein.

Tel: 1-631-559-9269 1-516-512-3133

Email: info@creative-biomart.com Fax: 1-631-938-8127

45-1 Ramsey Road, Shirley, NY 11967, USA