

Recombinant Human AP2M1 Protein, His-tagged

Cat. No. AP2M1-393H **Lot. No.** (See product label)

SPECIFICATION

Product Overview	Recombinant Human AP2M1(Arg170~Cys435) fused with His tag at N-terminal was expressed in E. coli.
Species	Human
Source	E.coli
ProteinLength	Arg170~Cys435
Description	This gene encodes a subunit of the heterotetrameric coat assembly protein complex 2 (AP2), which belongs to the adaptor complexes medium subunits family. The encoded protein is required for the activity of a vacuolar ATPase, which is responsible for proton pumping occurring in the acidification of endosomes and lysosomes. The encoded protein may also play an important role in regulating the intracellular trafficking and function of CTLA-4 protein. Three transcript variants encoding different isoforms have been found for this gene.
Form	PBS, pH7.4, containing 0.01% SKL, 1mM DTT, 5% Trehalose and Proclin300.
Molecular Mass	37.6kDa
Endotoxin	<1.0EU per 1g (determined by the LAL method)
Purity	> 98%

 Tel: 1-631-559-9269 1-516-512-3133

 Email: info@creative-biomart.com  Fax: 1-631-938-8127

 45-1 Ramsey Road, Shirley, NY 11967, USA

Applications	Positive Control; Immunogen; SDS-PAGE; WB. If bio-activity of the protein is needed, please check active protein.
Stability	The thermal stability is described by the loss rate. The loss rate was determined by accelerated thermal degradation test, that is, incubate the protein at 37 centigrade for 48h, and no obvious degradation and precipitation were observed. The loss rate is less than 5% within the expiration date under appropriate storage condition.
Storage	Avoid repeated freeze/thaw cycles. Store at 2-8 centigrade for one month. Aliquot and store at -80 centigrade for 12 months.
Reconstitution	Reconstitute in PBS or others.
GENE INFORMATION	
Gene Name	AP2M1 adaptor-related protein complex 2, mu 1 subunit [Homo sapiens]
Official Symbol	AP2M1
Synonyms	AP2M1; adaptor-related protein complex 2, mu 1 subunit; CLAPM1; AP-2 complex subunit mu; AP 2 mu 2 chain; AP50; clathrin adaptor complex AP2; mu subunit; clathrin assembly protein complex 2 medium chain; clathrin coat adaptor protein AP50; clathrin associated/assembly/adaptor protein; medium 1; HA2 50 kDa subunit; mu2; plasma membrane adaptor AP 2 50kDa protein; adaptin-mu2; AP-2 mu chain; AP-2 mu 2 chain; clathrin coat assembly protein AP50; clathrin coat-associated protein AP50; adaptor protein complex AP-2 subunit mu; clathrin adaptor complex AP2, mu subunit; plasma membrane adaptor AP-2 50kDa protein; plasma membrane adaptor AP-2 50 kDa protein; adapter-related protein complex 2 mu subunit; clathrin-associated/assembly/adaptor protein, medium 1;
Gene ID	1173

 Tel: 1-631-559-9269 1-516-512-3133

 Email: info@creative-biomart.com  Fax: 1-631-938-8127

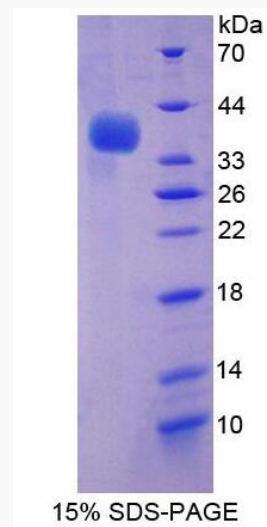
 45-1 Ramsey Road, Shirley, NY 11967, USA

mRNA Refseq [NM_001025205](#)

Protein Refseq [NP_001020376](#)

MIM [601024](#)

UniProt ID [Q96CW1](#)



Tel: 1-631-559-9269 1-516-512-3133

Email: info@creative-biomart.com Fax: 1-631-938-8127

45-1 Ramsey Road, Shirley, NY 11967, USA