

# Recombinant Human AP2M1 Protein, Myc/DDK-tagged, C13 and N15-labeled

**Cat. No.** AP2M1-5692H    **Lot. No.** (See product label)

## SPECIFICATION

<b>Product Overview</b>	AP2M1 MS Standard C13 and N15-labeled recombinant protein (NP_001020376) with a C-terminal MYC/DDK tag, was expressed in HEK293 cells.
<b>Species</b>	Human
<b>Source</b>	HEK293
<b>Description</b>	This gene encodes a subunit of the heterotetrameric coat assembly protein complex 2 (AP2), which belongs to the adaptor complexes medium subunits family. The encoded protein is required for the activity of a vacuolar ATPase, which is responsible for proton pumping occurring in the acidification of endosomes and lysosomes. The encoded protein may also play an important role in regulating the intracellular trafficking and function of CTLA-4 protein. Three transcript variants encoding different isoforms have been found for this gene.
<b>Molecular Mass</b>	49.2 kDa
<b>AA Sequence</b>	MIGGLFIYNHKGEVLISRVRDDIGRNAVD AFRVNVIHARQQVRSPVTNIARTSFFHV KRSNIWLA AVTKQNVNAAMVFEFLYK MCDVMAAYFGKISEENIKNNFVLIYELLDEIL DFGYPQNS ETGALKTFITQQGIKSQHQTKEEQS QITSQVTGQIGWRREGIKYRRNEL FLDVLESV NLLMSPQGQVLSAHVSGRVVMKSYLSGMPECKFGMNDKIVIEKQGKGT ADETSKSGKQ SIAIDDCTFHQCVRLSKFDSERSISFIPPDGEFELMRYRRTTKDIILPFR VIPLVREVG RTKLEVKVVIKSNFKPSLLAQKIEVRIPTPLNTSGVQVICMKGKAKYKAS

 Tel: 1-631-559-9269    1-516-512-3133

 Email: [info@creative-biomart.com](mailto:info@creative-biomart.com)     Fax: 1-631-938-8127

 45-1 Ramsey Road, Shirley, NY 11967, USA

ENAIVWKIKRMAGMKESQISAEIELLPTNDKKKWARPPISMNFEVFPFAPSGLKVRYLK  
VFEPKLNYSDDHVIKWVRYIGRSGIYETRCTRTRPLEQKLISEEDLAANDILDYKDDD  
DKV

**Purity** > 80% as determined by SDS-PAGE and Coomassie blue staining

**Stability** Stable for 3 months from receipt of products under proper storage and handling conditions.

**Storage** Store at -80 centigrade. Avoid repeated freeze-thaw cycles.

**Concentration** 50 µg/mL as determined by BCA

**Storage Buffer** 100 mM glycine, 25 mM Tris-HCl, pH 7.3.

## GENE INFORMATION

**Gene Name** [AP2M1 adaptor related protein complex 2 subunit mu 1 \[ Homo sapiens \(human\) \]](#)

**Official Symbol** [AP2M1](#)

**Synonyms**

AP2M1; adaptor-related protein complex 2, mu 1 subunit; CLAPM1; AP-2 complex subunit mu; AP 2 mu 2 chain; AP50; clathrin adaptor complex AP2; mu subunit; clathrin assembly protein complex 2 medium chain; clathrin coat adaptor protein AP50; clathrin associated/assembly/adaptor protein; medium 1; HA2 50 kDa subunit; mu2; plasma membrane adaptor AP 2 50kDa protein; adaptin-mu2; AP-2 mu chain; AP-2 mu 2 chain; clathrin coat assembly protein AP50; clathrin coat-associated protein AP50; adaptor protein complex AP-2 subunit mu; clathrin adaptor complex AP2, mu subunit; plasma membrane adaptor AP-2 50kDa protein; plasma membrane adaptor AP-2 50 kDa protein; adapter-related protein complex 2 mu subunit; clathrin-associated/assembly/adaptor protein, medium 1;

 Tel: 1-631-559-9269 1-516-512-3133

 Email: [info@creative-biomart.com](mailto:info@creative-biomart.com)  Fax: 1-631-938-8127

 45-1 Ramsey Road, Shirley, NY 11967, USA

Gene ID 1173

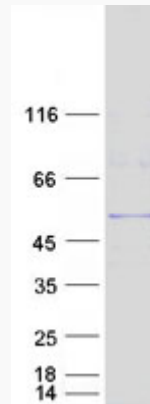
mRNA Refseq [NM\\_001025205](#)

Protein Refseq [NP\\_001020376](#)

MIM 601024

UniProt ID [Q96CW1](#)

SDS-PAGE



Tel: 1-631-559-9269 1-516-512-3133

Email: [info@creative-biomart.com](mailto:info@creative-biomart.com) Fax: 1-631-938-8127

45-1 Ramsey Road, Shirley, NY 11967, USA