

Recombinant Human AP2M1 protein, GST-tagged

Cat. No. AP2M1-653H Lot. No. (See product label)

SPECIFICATION

Product Overview	Human AP2M1 full-length ORF (NP_004059.2, 1 a.a. - 435 a.a.) recombinant protein with GST-tag at N-terminal.
Species	Human
Source	Wheat Germ
Description	This gene encodes a subunit of the heterotetrameric coat assembly protein complex 2 (AP2), which belongs to the adaptor complexes medium subunits family. The encoded protein is required for the activity of a vacuolar ATPase, which is responsible for proton pumping occurring in the acidification of endosomes and lysosomes. The encoded protein may also play an important role in regulating the intracellular trafficking and function of CTLA-4 protein. Three transcript variants encoding different isoforms have been found for this gene. [provided by RefSeq, Jul 2015]
Molecular Mass	76.1 kDa
AA Sequence	MIGGLFIYNHKGEVLISRVRDDIGRNAVD AFRVNVIHARQQVRSPVTNIARTSFFHV KRSNIWLA AVTKQNVNAAMVFEFLYKMC DVMAAYFGKISEENIKNNFVLIYELLDEIL DFGYPQNSETGALKTFITQQGIKSQHQTKEEQSQITSQVTGQIGWRREGIKYRRNEL FLDVLESVNLLMSPQGQVLSAHVSGRVVMKSYLSGMPECKFGMNDKIVIEKQGKGT ADETSKSGKQSAIDDCTFHQCVRLSKFDSERSISFIPPDGEFELMRYRRTTKDIILPFR VIPLVREVGRTKLEVKVVIKSNFKPSLLAQKIEVRIPTPLNTSGVQVICMKGKAKYKAS ENAIVWKIKRMAGMKESQISAEIELLPTNDKKKWARPPISMNFEVFPFAPSGLKVRYLK

 Tel: 1-631-559-9269 1-516-512-3133

 Email: info@creative-biomart.com  Fax: 1-631-938-8127

 45-1 Ramsey Road, Shirley, NY 11967, USA

VFEPKLNYSHDHVIKVVRYIGRSGIYETRC

Applications

Enzyme-linked Immunoabsorbent Assay; Western Blot (Recombinant protein); Antibody Production; Protein Array

Notes

Best use within three months from the date of receipt of this protein.

Storage

Store at -80 centigrade. Aliquot to avoid repeated freezing and thawing.

Storage Buffer

50 mM Tris-HCl, 10 mM reduced Glutathione, pH=8.0 in the elution buffer.

GENE INFORMATION

Gene Name

AP2M1 adaptor-related protein complex 2, mu 1 subunit [Homo sapiens]

Official Symbol

AP2M1

Synonyms

AP2M1; adaptor-related protein complex 2, mu 1 subunit; CLAPM1; AP-2 complex subunit mu; AP 2 mu 2 chain; AP50; clathrin adaptor complex AP2; mu subunit; clathrin assembly protein complex 2 medium chain; clathrin coat adaptor protein AP50; clathrin associated/assembly/adaptor protein; medium 1; HA2 50 kDa subunit; mu2; plasma membrane adaptor AP 2 50kDa protein; adaptin-mu2; AP-2 mu chain; AP-2 mu 2 chain; clathrin coat assembly protein AP50; clathrin coat-associated protein AP50; adaptor protein complex AP-2 subunit mu; clathrin adaptor complex AP2, mu subunit; plasma membrane adaptor AP-2 50kDa protein; plasma membrane adaptor AP-2 50 kDa protein; adapter-related protein complex 2 mu subunit; clathrin-associated/assembly/adaptor protein, medium 1;

Gene ID

1173

mRNA Refseq

NM_001025205

 Tel: 1-631-559-9269 1-516-512-3133

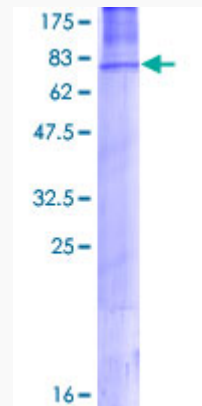
 Email: info@creative-biomart.com  Fax: 1-631-938-8127

 45-1 Ramsey Road, Shirley, NY 11967, USA

Protein Refseq NP_001020376

MIM 601024

UniProt ID Q96CW1



12.5% SDS-PAGE Stained with Coomassie Blue.

 Tel: 1-631-559-9269 1-516-512-3133

 Email: info@creative-biomart.com  Fax: 1-631-938-8127

 45-1 Ramsey Road, Shirley, NY 11967, USA