

Recombinant Human AP2S1 protein, GST-tagged

Cat. No. AP2S1-654H **Lot. No.** (See product label)

SPECIFICATION

Product Overview	Human AP2S1 full-length ORF (AAH06337, 1 a.a. - 142 a.a.) recombinant protein with GST-tag at N-terminal.
Species	Human
Source	Wheat Germ
Description	One of two major clathrin-associated adaptor complexes, AP-2, is a heterotetramer which is associated with the plasma membrane. This complex is composed of two large chains, a medium chain, and a small chain. This gene encodes the small chain of this complex. Alternative splicing results in multiple transcript variants. [provided by RefSeq, Jul 2014]
Molecular Mass	41.36 kDa
AA Sequence	MIRFILIQNRAGKTRLAKWYMQFDDDEKQKLIIEVHAVVTVRDAKHTNFVEFRNFKII YRRYAGLYFCICVDVNDNNLAYLEAIHNFVEVLNEYFHNVCELDLVFNFYKVYTVVDE MFLAGEIRETSQTKVLKQLLMLQSLE
Applications	Enzyme-linked Immunoabsorbent Assay; Western Blot (Recombinant protein); Antibody Production; Protein Array
Notes	Best use within three months from the date of receipt of this protein.
Storage	Store at -80 centigrade. Aliquot to avoid repeated freezing and thawing.

 Tel: 1-631-559-9269 1-516-512-3133

 Email: info@creative-biomart.com  Fax: 1-631-938-8127

 45-1 Ramsey Road, Shirley, NY 11967, USA

Storage Buffer 50 mM Tris-HCl, 10 mM reduced Glutathione, pH=8.0 in the elution buffer.

GENE INFORMATION

Gene Name AP2S1 adaptor-related protein complex 2, sigma 1 subunit [Homo sapiens]

Official Symbol AP2S1

Synonyms AP2S1; adaptor-related protein complex 2, sigma 1 subunit; CLAPS2; AP-2 complex subunit sigma; sigma2-adaptin; HA2 17 kDa subunit; clathrin coat assembly protein AP17; clathrin coat-associated protein AP17; clathrin assembly protein 2 small chain; adaptor protein complex AP-2 subunit sigma; plasma membrane adaptor AP-2 17 kDa protein; adapter-related protein complex 2 sigma subunit; clathrin-associated/assembly/adaptor protein, small 2 (17kD); AP17; AP17-DELTA;

Gene ID 1175

mRNA Refseq NM_004069

Protein Refseq NP_004060

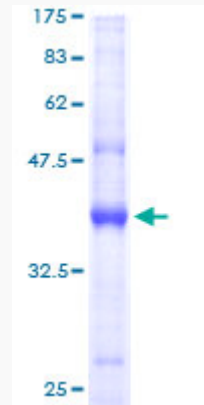
MIM 602242

UniProt ID P53680

 Tel: 1-631-559-9269 1-516-512-3133

 Email: info@creative-biomart.com  Fax: 1-631-938-8127

 45-1 Ramsey Road, Shirley, NY 11967, USA



12.5% SDS-PAGE Stained with Coomassie Blue.

 Tel: 1-631-559-9269 1-516-512-3133

 Email: info@creative-biomart.com  Fax: 1-631-938-8127

 45-1 Ramsey Road, Shirley, NY 11967, USA