

## Recombinant Human AP3B1 Protein, His-tagged

**Cat. No.** AP3B1-188H    **Lot. No.** (See product label)

### SPECIFICATION

<b>Product Overview</b>	Recombinant Human AP3B1 Protein (Met1-Leu233) with N-His tag was expressed in E. coli.
<b>Species</b>	Human
<b>Source</b>	E.coli
<b>ProteinLength</b>	Met1-Leu233
<b>Description</b>	This gene encodes a protein that may play a role in organelle biogenesis associated with melanosomes, platelet dense granules, and lysosomes. The encoded protein is part of the heterotetrameric AP-3 protein complex which interacts with the scaffolding protein clathrin. Mutations in this gene are associated with Hermansky-Pudlak syndrome type 2. Two transcript variants encoding different isoforms have been found for this gene.
<b>Form</b>	Freeze-dried powder
<b>Molecular Mass</b>	Predicted Molecular Mass: 29.5 kDa Accurate Molecular Mass: 30 kDa
<b>Purity</b>	> 95%
<b>Applications</b>	Positive Control; Immunogen; SDS-PAGE; WB.

 Tel: 1-631-559-9269    1-516-512-3133

 Email: [info@creative-biomart.com](mailto:info@creative-biomart.com)     Fax: 1-631-938-8127

 45-1 Ramsey Road, Shirley, NY 11967, USA

<b>Stability</b>	The thermal stability is described by the loss rate. The loss rate was determined by accelerated thermal degradation test, that is, incubate the protein at 37 centigrade for 48h, and no obvious degradation and precipitation were observed. The loss rate is less than 5% within the expiration date under appropriate storage condition.
<b>Storage</b>	Avoid repeated freeze/thaw cycles. Store at 2-8 centigrade for one month. Aliquot and store at -80 centigrade for 12 months.
<b>Storage Buffer</b>	20mM Tris, 150mM NaCl, pH8.0, containing 1mM EDTA, 1mM DTT, 0.01% SKL, 5% Trehalose and Proclin300.
<b>Reconstitution</b>	Reconstitute in sterile water to a concentration of 0.1-1.0 mg/mL. Do not vortex.

## GENE INFORMATION

<b>Gene Name</b>	<a href="#">AP3B1 adaptor-related protein complex 3, beta 1 subunit [ Homo sapiens (human) ]</a>
<b>Official Symbol</b>	<a href="#">AP3B1</a>
<b>Synonyms</b>	AP3B1; adaptor-related protein complex 3, beta 1 subunit; AP-3 complex subunit beta-1; ADTB3A; HPS2; beta3A-adaptin; beta-3A-adaptin; AP-3 complex beta-3A subunit; adaptor protein complex AP-3 subunit beta-1; adapter-related protein complex 3 subunit beta-1; clathrin assembly protein complex 3 beta-1 large chain; PE; HPS; ADTB3
<b>Gene ID</b>	<a href="#">8546</a>
<b>mRNA Refseq</b>	<a href="#">NM_003664</a>
<b>Protein Refseq</b>	<a href="#">NP_003655</a>

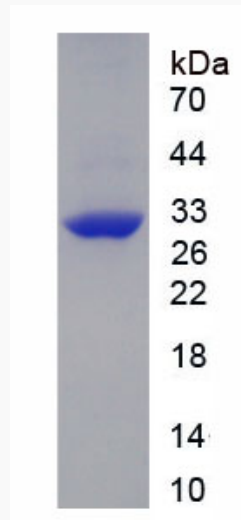
 Tel: 1-631-559-9269 1-516-512-3133

 Email: [info@creative-biomart.com](mailto:info@creative-biomart.com)  Fax: 1-631-938-8127

 45-1 Ramsey Road, Shirley, NY 11967, USA

**MIM** 603401

**UniProt ID** O00203



 Tel: 1-631-559-9269 1-516-512-3133

 Email: [info@creative-biomart.com](mailto:info@creative-biomart.com)  Fax: 1-631-938-8127

 45-1 Ramsey Road, Shirley, NY 11967, USA