

Recombinant Human AP3B1 protein, GST-tagged

Cat. No. AP3B1-655H **Lot. No.** (See product label)

SPECIFICATION

Product Overview	Human AP3B1 partial ORF (NP_003655, 995 a.a. - 1094 a.a.) recombinant protein with GST-tag at N-terminal.
Species	Human
Source	Wheat Germ
Description	This gene encodes a protein that may play a role in organelle biogenesis associated with melanosomes, platelet dense granules, and lysosomes. The encoded protein is part of the heterotetrameric AP-3 protein complex which interacts with the scaffolding protein clathrin. Mutations in this gene are associated with Hermansky-Pudlak syndrome type 2. Two transcript variants encoding different isoforms have been found for this gene. [provided by RefSeq, Nov 2012]
Molecular Mass	36.74 kDa
AA Sequence	KEQGVLTGMNETSAVIAAPQNFTPSVIFQKVVNVANVGAVPSGQDNIHRFAAKTVH SGSLMLVTVELKEGSTAQLIINTEKTVIGSVLLRELKPVLSQG
Applications	Enzyme-linked Immunoabsorbent Assay; Western Blot (Recombinant protein); Antibody Production; Protein Array
Notes	Best use within three months from the date of receipt of this protein.
Storage	Store at -80 centigrade. Aliquot to avoid repeated freezing and thawing.

 Tel: 1-631-559-9269 1-516-512-3133

 Email: info@creative-biomart.com  Fax: 1-631-938-8127

 45-1 Ramsey Road, Shirley, NY 11967, USA

Storage Buffer 50 mM Tris-HCl, 10 mM reduced Glutathione, pH=8.0 in the elution buffer.

GENE INFORMATION

Gene Name [AP3B1 adaptor-related protein complex 3, beta 1 subunit \[Homo sapiens \]](#)

Official Symbol [AP3B1](#)

Synonyms AP3B1; adaptor-related protein complex 3, beta 1 subunit; AP-3 complex subunit beta-1; ADTB3A; HPS2; beta3A-adaptin; beta-3A-adaptin; AP-3 complex beta-3A subunit; adaptor protein complex AP-3 subunit beta-1; adapter-related protein complex 3 subunit beta-1; clathrin assembly protein complex 3 beta-1 large chain; PE; HPS; ADTB3;

Gene ID [8546](#)

mRNA Refseq [NM_003664](#)

Protein Refseq [NP_003655](#)

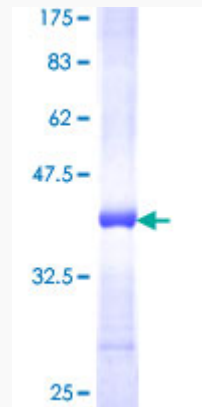
MIM [603401](#)

UniProt ID [O00203](#)

 Tel: 1-631-559-9269 1-516-512-3133

 Email: info@creative-biomart.com  Fax: 1-631-938-8127

 45-1 Ramsey Road, Shirley, NY 11967, USA



12.5% SDS-PAGE Stained with Coomassie Blue.

 Tel: 1-631-559-9269 1-516-512-3133

 Email: info@creative-biomart.com  Fax: 1-631-938-8127

 45-1 Ramsey Road, Shirley, NY 11967, USA