

Recombinant Human AP3M2 protein, GST-tagged

Cat. No. AP3M2-658H Lot. No. (See product label)

SPECIFICATION

Product Overview	Human AP3M2 full-length ORF (NP_006794.1, 1 a.a. - 418 a.a.) recombinant protein with GST-tag at N-terminal.
Species	Human
Source	Wheat Germ
Description	This gene encodes a subunit of the heterotetrameric adaptor-related protein complex 3 (AP-3), which belongs to the adaptor complexes medium subunits family. The AP-3 complex plays a role in protein trafficking to lysosomes and specialized organelles. Multiple alternatively spliced variants, encoding the same protein, have been identified. [provided by RefSeq, Aug 2008]
Molecular Mass	73.4 kDa
AA Sequence	<p>MIHSLFLINSSGDIFLEKHWKSVVSRVCDYFFEAQERATEAENVPPVIPTPHHYLLS VYRHKIFFVAVIQTEVPPLFVIEFLHRVVDTFQDYFGVCSEPVIKDNVVVYEVLEEML DNGFPLATESNILKELIKPPTILRTVVNTITGSTNVGDQLPTGQLSVVPWRRTGVKYT NNEYFDVIEEIDAIDKSGSTITAEIQGVIDACVKLTGMPDLTLSFMNPRLLDDVSFHP CVRFKRWESERILSFIPPDGNFRLLSYHVSAQNLVAIPVYVKHNISFRDSSSLGRFEIT VGPKQTMGKTIEGVTVT SQMPKGVNLMSLTSPSQGTHTFDPVTKMLSVDVGKINPQ KLPSLKGTMSLQAGASKPDENPTINLQFKIQQLAISGLKVNRLDMYGEKYKPFKGIKY MTKAGKFQVRT</p>
Applications	Enzyme-linked Immunoabsorbent Assay; Western Blot (Recombinant protein);

 Tel: 1-631-559-9269 1-516-512-3133

 Email: info@creative-biomart.com  Fax: 1-631-938-8127

 45-1 Ramsey Road, Shirley, NY 11967, USA

Antibody Production; Protein Array

Notes	Best use within three months from the date of receipt of this protein.
Storage	Store at -80 centigrade. Aliquot to avoid repeated freezing and thawing.
Storage Buffer	50 mM Tris-HCl, 10 mM reduced Glutathione, pH=8.0 in the elution buffer.

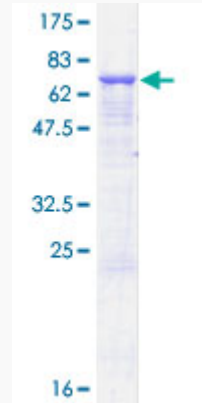
GENE INFORMATION

Gene Name	AP3M2 adaptor-related protein complex 3, mu 2 subunit [Homo sapiens]
Official Symbol	AP3M2
Synonyms	AP3M2; adaptor-related protein complex 3, mu 2 subunit; AP-3 complex subunit mu-2; AP47B; CLA20; mu3B-adaptin; HA1 47kDa subunit homolog 2; HA1 47 kDa subunit homolog 2; clathrin-associated protein AP47 homolog 2; golgi adaptor AP-1 47 kDa protein homolog 2; clathrin coat assembly protein AP47 homolog 2; adapter-related protein complex 3 mu-2 subunit; clathrin coat-associated protein AP47 homolog 2; clathrin assembly protein assembly protein complex 1 medium chain homolog 2; P47B;
Gene ID	10947
mRNA Refseq	NM_001134296
Protein Refseq	NP_001127768
MIM	610469
UniProt ID	P53677

 Tel: 1-631-559-9269 1-516-512-3133

 Email: info@creative-biomart.com  Fax: 1-631-938-8127

 45-1 Ramsey Road, Shirley, NY 11967, USA



12.5% SDS-PAGE Stained with Coomassie Blue.

 Tel: 1-631-559-9269 1-516-512-3133

 Email: info@creative-biomart.com  Fax: 1-631-938-8127

 45-1 Ramsey Road, Shirley, NY 11967, USA