

## Recombinant Human AP4M1 protein, GST-tagged

Cat. No. AP4M1-663H Lot. No. (See product label)

### SPECIFICATION

<b>Product Overview</b>	Human AP4M1 full-length ORF ( AAH18705, 1 a.a. - 453 a.a.) recombinant protein with GST-tag at N-terminal.
<b>Species</b>	Human
<b>Source</b>	Wheat Germ
<b>Description</b>	This gene encodes a subunit of the heterotetrameric AP-4 complex. The encoded protein belongs to the adaptor complexes medium subunits family. This AP-4 complex is involved in the recognition and sorting of cargo proteins with tyrosine-based motifs from the trans-golgi network to the endosomal-lysosomal system. [provided by RefSeq, Jul 2008]
<b>Molecular Mass</b>	75.57 kDa
<b>AA Sequence</b>	MISQFFILSSKGDPLIYKDFRGDSSGGRDVAELFYRKLTLGLPGDESPVMHHHGRHFI HIRHSGLYLVVTTSENVSPFSLLELLSRLATLLGDYCGSLGEGTISRNVALVYELLDEV LDYGYVQTTSTEMLRNFIQTEAVVSKPFSFLDLSSVGLFGAETQQSKVAPSSAASRP VLSSRSQSQKNEVFLDVVERLSVLIASNGSLLKVDVQGEIRLKSFLPSGSEMRIGHT EEFCVGKSELRGYGPGRVDEVSFHSSVNLDEFESHRLRLQPPQGELTVMRYQLS DDLPSPLPFRFLFPSVQWDRGSGRLQVYLKLRCDLLSKSQALNVRLHLPLPRGVVSL SQELSSPEQKAELAEGALRWDLPRVQGGSQLSGLFQMDVPGPPGPPSHGLSTSAS PLGLGPASLSFELPRHTCSGLQVRFLRLAFRPCGNANPHKWVRHLSHSDAYVIRI
<b>Applications</b>	Enzyme-linked Immunoabsorbent Assay; Western Blot (Recombinant protein);

 Tel: 1-631-559-9269 1-516-512-3133

 Email: [info@creative-biomart.com](mailto:info@creative-biomart.com)  Fax: 1-631-938-8127

 45-1 Ramsey Road, Shirley, NY 11967, USA

Antibody Production; Protein Array

<b>Notes</b>	Best use within three months from the date of receipt of this protein.
<b>Storage</b>	Store at -80 centigrade. Aliquot to avoid repeated freezing and thawing.
<b>Storage Buffer</b>	50 mM Tris-HCl, 10 mM reduced Glutathione, pH=8.0 in the elution buffer.

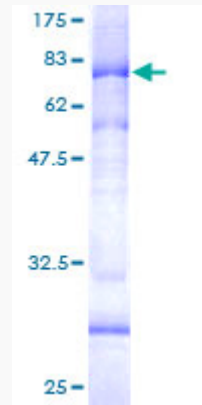
## GENE INFORMATION

<b>Gene Name</b>	AP4M1 adaptor-related protein complex 4, mu 1 subunit [ Homo sapiens ]
<b>Official Symbol</b>	AP4M1
<b>Synonyms</b>	AP4M1; adaptor-related protein complex 4, mu 1 subunit; AP-4 complex subunit mu-1; adaptor related protein complex AP 4 mu4 subunit; AP 4 adapter complex mu subunit; mu subunit of AP 4; MU 4; mu adaptin related protein 2; MU ARP2; mu4; mu4-adaptin; mu subunit of AP-4; mu-adaptin-related protein 2; mu-adaptin-related protein-2; adapter-related protein complex 4 mu-1 subunit; adaptor-related protein complex AP-4 mu4 subunit; MU-4; CPSQ3; MU-ARP2;
<b>Gene ID</b>	9179
<b>mRNA Refseq</b>	NM_004722
<b>Protein Refseq</b>	NP_004713
<b>MIM</b>	602296
<b>UniProt ID</b>	O00189

 Tel: 1-631-559-9269 1-516-512-3133

 Email: [info@creative-biomart.com](mailto:info@creative-biomart.com)  Fax: 1-631-938-8127

 45-1 Ramsey Road, Shirley, NY 11967, USA



12.5% SDS-PAGE Stained with Coomassie Blue.

 Tel: 1-631-559-9269 1-516-512-3133

 Email: [info@creative-biomart.com](mailto:info@creative-biomart.com)  Fax: 1-631-938-8127

 45-1 Ramsey Road, Shirley, NY 11967, USA