

Recombinant Human APBA2 Protein (Tyr459-Asn722), N-His-tagged

Cat. No. APBA2-0463H Lot. No. (See product label)

SPECIFICATION

Product Overview	Recombinant human APBA2 (Tyr459-Asn722) was fused with the N-His tag and was expressed in E. coli.
Species	Human
Source	E.coli
ProteinLength	Tyr459-Asn722
Form	Lyophilized powder/frozen liquid
Molecular Mass	31.00 kDa
Purity	>90% as determined by SDS-PAGE
Notes	For research use only.
Storage	Use a manual defrost freezer and avoid repeated freeze thaw cycles. Store at 2 to 8 centigrade for one week. Store at -20 to -80 centigrade for twelve months from the date of receipt.
Storage Buffer	0.01M PBS, pH 7.4, 0.02% NLS
Reconstitution	Reconstitute in sterile water for a stock solution.

 Tel: 1-631-559-9269 1-516-512-3133

 Email: info@creative-biomart.com  Fax: 1-631-938-8127

 45-1 Ramsey Road, Shirley, NY 11967, USA

Shipping They are shipped out with dry ice/blue ice unless customers require otherwise.

GENE INFORMATION

Gene Name APBA2 amyloid beta (A4) precursor protein-binding, family A, member 2 [Homo sapiens (human)]

Official Symbol APBA2

Synonyms APBA2; amyloid beta (A4) precursor protein-binding, family A, member 2; amyloid beta (A4) precursor protein binding, family A, member 2 (X11 like), MINT2, X11 like, X11L; amyloid beta A4 precursor protein-binding family A member 2; D15S1518E; HsT16821; LIN 10; MGC:14091; mint-2; X11-like protein; adapter protein X11beta; neuron-specific X11L protein; neuronal munc18-1-interacting protein 2; phosphotyrosine-binding/-interacting domain (PTB)-bearing protein; amyloid beta (A4) precursor protein-binding, family A, member 2 (X11-like); X11L; MINT2; LIN-10; X11-BETA; MGC99508;

Gene ID 321

mRNA Refseq NM_001130414

Protein Refseq NP_001123886

MIM 602712

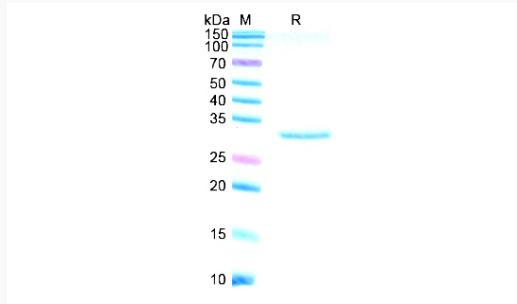
UniProt ID Q99767

 Tel: 1-631-559-9269 1-516-512-3133

 Email: info@creative-biomart.com  Fax: 1-631-938-8127

 45-1 Ramsey Road, Shirley, NY 11967, USA

SDS-PAGE



 Tel: 1-631-559-9269 1-516-512-3133

 Email: info@creative-biomart.com  Fax: 1-631-938-8127

 45-1 Ramsey Road, Shirley, NY 11967, USA