

Recombinant Human APBB1 protein, GST-tagged

Cat. No. APBB1-668H **Lot. No.** (See product label)

SPECIFICATION

Product Overview	Human APBB1 full-length ORF (NP_663722.1, 1 a.a. - 708 a.a.) recombinant protein with GST-tag at N-terminal.
Species	Human
Source	Wheat Germ
Description	<p>The protein encoded by this gene is a member of the Fe65 protein family. It is an adaptor protein localized in the nucleus. It interacts with the Alzheimer's disease amyloid precursor protein (APP), transcription factor CP2/LSF/LBP1 and the low-density lipoprotein receptor-related protein. APP functions as a cytosolic anchoring site that can prevent the gene product's nuclear translocation. This encoded protein could play an important role in the pathogenesis of Alzheimer's disease. It is thought to regulate transcription. Also it is observed to block cell cycle progression by downregulating thymidylate synthase expression. Multiple alternatively spliced transcript variants encoding different isoforms have been described for this gene. [provided by RefSeq, Mar 2012]</p>
Molecular Mass	103.4 kDa
AA Sequence	<p>MSVPSSLSQSAINANSHGGPALSPLPLHAAHNQLLNAKLQATAVGPKDLRSAMGE GGGPEPGPANAKWLKEGQNQLRRAATAHRDQNRNVTLLAEEASQEPEMAPLGP KGLIHLYSELELSAHNAANRGLRGPGLIISTQEQQPDEGEEKAAGEAEEDDDDE EEEEDLSSPPGLPEPLESVEAPPRPQALTDGPREHSKSASLLFGMRNSAASDEDSS</p>

 Tel: 1-631-559-9269 1-516-512-3133

 Email: info@creative-biomart.com  Fax: 1-631-938-8127

 45-1 Ramsey Road, Shirley, NY 11967, USA

WATLSQGSPSYGSPEDTDSFWNPNAFETDSDLPAGWMRVQDTS GTYYWHIPTGT
 TQWEPPGRASPSQGSSPQEESQLTWTGFAHGEGFEDGEFWKDEPSDEAPMELGL
 KEPEEGTLTFPAQSLSPPELPQEEEEKLPPRNTNPGIKCFAVRSLGWVEMTEEELAPG
 RSSVAVNNCIRQLSYHKNNLHDPMSGGWGEGKDLLLQLEDETCLKLVEPQSQALLHA
 QPIISIRVWGVGRDGRDFAYVARDKLTQMLKCHVFRCEAPAKNIATSLHEICKSKIMA
 ERRNARCLVNGLSLDHSKLVDVPFQVEFPAPKNELVQKFQVYYLGNVPVAKPVGVD
 VINGALESVLSSSSREQWTPSHVSVAPATLTILHQQTEAVLGECRVRFLSFLAVGRD
 VHTFAFIMAAGPASFCCHMFWCEPNAASLSEAVQAACMLRYQKCLDARSQASTSC
 LPAPPAESVARRVGWTVRRGVQSLWGLKPKRLGAHTP

Applications

Enzyme-linked Immunoabsorbent Assay; Western Blot (Recombinant protein);
Antibody Production; Protein Array

Notes

Best use within three months from the date of receipt of this protein.

Storage

Store at -80 centigrade. Aliquot to avoid repeated freezing and thawing.

Storage Buffer

50 mM Tris-HCl, 10 mM reduced Glutathione, pH=8.0 in the elution buffer.

GENE INFORMATION

Gene Name

APBB1 amyloid beta (A4) precursor protein-binding, family B, member 1 (Fe65) [Homo sapiens]

Official Symbol

APBB1

Synonyms

APBB1; amyloid beta (A4) precursor protein-binding, family B, member 1 (Fe65); RIR; amyloid beta A4 precursor protein-binding family B member 1; Fe65; stat-like protein; adaptor protein FE65a2; FE65; MGC:9072;

Gene ID

322

 Tel: 1-631-559-9269 1-516-512-3133

 Email: info@creative-biomart.com  Fax: 1-631-938-8127

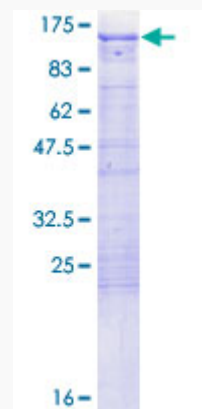
 45-1 Ramsey Road, Shirley, NY 11967, USA

mRNA Refseq NM_001164

Protein Refseq NP_001155

MIM 602709

UniProt ID O00213



12.5% SDS-PAGE Stained with Coomassie Blue.

Tel: 1-631-559-9269 1-516-512-3133

Email: info@creative-biomart.com Fax: 1-631-938-8127

45-1 Ramsey Road, Shirley, NY 11967, USA