

Recombinant Human APBB1IP protein, His & GST-tagged

Cat. No. APBB1IP-1420H Lot. No. (See product label)

SPECIFICATION

Product Overview	Recombinant Human APBB1IP aa. (Ser188~Lys421 (Accession # Q7Z5R6)) fused with N-terminal His & GST tag was produced in E. coli cells.
Species	Human
Source	E.coli
ProteinLength	Ser188~Lys421
Form	Freeze-dried powder
Molecular Mass	Predicted Molecular Mass: 57.9kDa
Endotoxin	<1.0EU per 1ug (determined by the LAL method)
Purity	>95%
Applications	SDS-PAGE; WB; ELISA; IP.
Stability	The thermal stability is described by the loss rate. The loss rate was determined by accelerated thermal degradation test, that is, incubate the protein at 37°C for 48h, and no obvious degradation and precipitation were observed. The loss rate is less than 5% within the expiration date under appropriate storage condition.
Storage	Avoid repeated freeze/thaw cycles. Store at 2-8°C for one month. Aliquot and store at

 Tel: 1-631-559-9269 1-516-512-3133

 Email: info@creative-biomart.com  Fax: 1-631-938-8127

 45-1 Ramsey Road, Shirley, NY 11967, USA

-80°C for 12 months.

Storage buffer Supplied as lyophilized form in PBS, pH7.4, containing 5% trehalose, 0.01% sarcosyl.

Reconstitution Reconstitute in sterile PBS, pH7.2-pH7.4.

Isoelectric Point 7.5

GENE INFORMATION

Gene Name [APBB1IP amyloid beta precursor protein binding family B member 1 interacting protein \[Homo sapiens \(human\) \]](#)

Official Symbol [APBB1IP](#)

Synonyms

APBB1IP; amyloid beta precursor protein binding family B member 1 interacting protein; RIAM; INAG1; PREL1; RARP1; amyloid beta A4 precursor protein-binding family B member 1-interacting protein; APBB1-interacting protein 1; PREL-1; RARP-1; Rap1-GTP-interacting adaptor molecule; Rap1-interacting adaptor molecule; proline rich EVH1 ligand 1; proline-rich protein 73; rap1-GTP-interacting adapter molecule; retinoic acid-responsive proline-rich protein 1

Gene ID [54518](#)

mRNA Refseq [NM_019043.3](#)

Protein Refseq [NP_061916.3](#)

UniProt ID [Q7Z5R6](#)

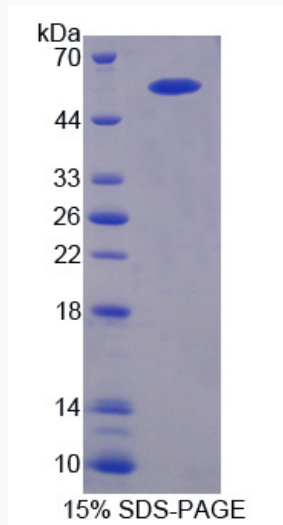
 Tel: 1-631-559-9269 1-516-512-3133

 Email: info@creative-biomart.com  Fax: 1-631-938-8127

 45-1 Ramsey Road, Shirley, NY 11967, USA



SDS-PAGE



Tel: 1-631-559-9269 1-516-512-3133

Email: info@creative-biomart.com Fax: 1-631-938-8127

45-1 Ramsey Road, Shirley, NY 11967, USA