

Recombinant Human APBB1IP protein, GST-tagged

Cat. No. APBB1IP-669H **Lot. No.** (See product label)

SPECIFICATION

Product Overview	Human APBB1IP full-length ORF (AAH35636, 1 a.a. - 172 a.a.) recombinant protein with GST-tag at N-terminal.
Species	Human
Source	Wheat Germ
Description	APBB1IP (Amyloid Beta Precursor Protein Binding Family B Member 1 Interacting Protein) is a Protein Coding gene. Among its related pathways are RET signaling and Immune System. An important paralog of this gene is RAPH1.
Molecular Mass	44.66 kDa
AA Sequence	MGESSEDIDQMFSTLLGEMDLLTQSLGVDTLPPDPNPPRAEFNYSVGFKDLNESL NALEDQDLDMADLVADISEAEQRTIQAQKESLQNHHSASLQASIFSGAASLGYG TNVAATGISQYEDDLPPPPADPVLDLPLPPPPPEPLSQVSMWDQRWQDHQPLLPIT DVP
Applications	Enzyme-linked Immunoabsorbent Assay; Western Blot (Recombinant protein); Antibody Production; Protein Array
Notes	Best use within three months from the date of receipt of this protein.
Storage	Store at -80 centigrade. Aliquot to avoid repeated freezing and thawing.

 Tel: 1-631-559-9269 1-516-512-3133

 Email: info@creative-biomart.com  Fax: 1-631-938-8127

 45-1 Ramsey Road, Shirley, NY 11967, USA

Storage Buffer 50 mM Tris-HCl, 10 mM reduced Glutathione, pH=8.0 in the elution buffer.

GENE INFORMATION

Gene Name APBB1IP amyloid beta (A4) precursor protein-binding, family B, member 1 interacting protein [Homo sapiens]

Official Symbol APBB1IP

Synonyms APBB1IP; amyloid beta (A4) precursor protein-binding, family B, member 1 interacting protein; amyloid beta A4 precursor protein-binding family B member 1-interacting protein; INAG1; Rap1 GTP interacting adaptor molecule; RIAM; PREL-1; RARP-1; proline-rich protein 73; proline rich EVH1 ligand 1; proline-rich EVH1 ligand 1; APBB1-interacting protein 1; Rap1-interacting adaptor molecule; Rap1-GTP-interacting adaptor molecule; rap1-GTP-interacting adapter molecule; retinoic acid-responsive proline-rich protein 1; PREL1; RARP1;

Gene ID 54518

mRNA Refseq NM_019043

Protein Refseq NP_061916

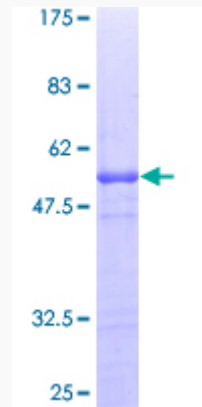
MIM 609036

UniProt ID Q7Z5R6

 Tel: 1-631-559-9269 1-516-512-3133

 Email: info@creative-biomart.com  Fax: 1-631-938-8127

 45-1 Ramsey Road, Shirley, NY 11967, USA



12.5% SDS-PAGE Stained with Coomassie Blue.

 Tel: 1-631-559-9269 1-516-512-3133

 Email: info@creative-biomart.com  Fax: 1-631-938-8127

 45-1 Ramsey Road, Shirley, NY 11967, USA