

Recombinant Human APBB2 protein, GST-tagged

Cat. No. APBB2-670H **Lot. No.** (See product label)

SPECIFICATION

Product Overview	Human APBB2 partial ORF (AAH27946, 1 a.a. - 100 a.a.) recombinant protein with GST-tag at N-terminal.
Species	Human
Source	Wheat Germ
Description	The protein encoded by this gene interacts with the cytoplasmic domains of amyloid beta (A4) precursor protein and amyloid beta (A4) precursor-like protein 2. This protein contains two phosphotyrosine binding (PTB) domains, which are thought to function in signal transduction. Polymorphisms in this gene have been associated with Alzheimer's disease. Alternative splicing results in multiple transcript variants. [provided by RefSeq, Oct 2009]
Molecular Mass	36.74 kDa
AA Sequence	MSEVLPADSGVDTLAVFMASGGTTDVTNRNSPATPPNTLNLRSSHNELLNAEIKHTE TKNSTPPKCRKKYALTNIQAAMGLSDPAAQPLLGNLSANIKLV
Applications	Enzyme-linked Immunoabsorbent Assay; Western Blot (Recombinant protein); Antibody Production; Protein Array
Notes	Best use within three months from the date of receipt of this protein.
Storage	Store at -80 centigrade. Aliquot to avoid repeated freezing and thawing.

 Tel: 1-631-559-9269 1-516-512-3133

 Email: info@creative-biomart.com  Fax: 1-631-938-8127

 45-1 Ramsey Road, Shirley, NY 11967, USA

Storage Buffer 50 mM Tris-HCl, 10 mM reduced Glutathione, pH=8.0 in the elution buffer.

GENE INFORMATION

Gene Name APBB2 amyloid beta (A4) precursor protein-binding, family B, member 2 [Homo sapiens]

Official Symbol APBB2

Synonyms APBB2; amyloid beta (A4) precursor protein-binding, family B, member 2; amyloid beta A4 precursor protein-binding family B member 2; Fe65 like; FE65L; FE65L1; MGC35575; Fe65-like 1; protein Fe65-like 1; DKFZp434E033;

Gene ID 323

mRNA Refseq NM_001166050

Protein Refseq NP_001159522

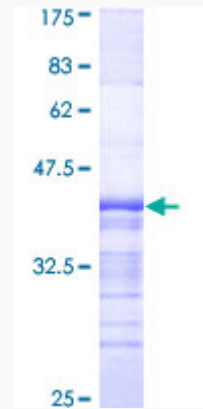
MIM 602710

UniProt ID Q92870

 Tel: 1-631-559-9269 1-516-512-3133

 Email: info@creative-biomart.com  Fax: 1-631-938-8127

 45-1 Ramsey Road, Shirley, NY 11967, USA



12.5% SDS-PAGE Stained with Coomassie Blue.

 Tel: 1-631-559-9269 1-516-512-3133

 Email: info@creative-biomart.com  Fax: 1-631-938-8127

 45-1 Ramsey Road, Shirley, NY 11967, USA