

Recombinant Human APCDD1 Protein, Myc/DDK-tagged, C13 and N15-labeled

Cat. No. APCDD1-4325H **Lot. No.** (See product label)

SPECIFICATION

Product Overview APCDD1 MS Standard C13 and N15-labeled recombinant protein (NP_694545) with a C-terminal MYC/DDK tag, was expressed in HEK293 cells.

Species Human

Source HEK293

Description This locus encodes an inhibitor of the Wnt signaling pathway. Mutations at this locus have been associated with hereditary hypotrichosis simplex. Increased expression of this gene may also be associated with colorectal carcinogenesis.

Molecular Mass 58.8 kDa

AA Sequence

```
MSWPRLLLLRYLFPALLLHGLGEGSALLHPDSRSHPRSLEKSAWRAFKESQCHHML
KHLHNGARITVQMPPTIEGHVSTGCEVRSGPEFITRSYRFYHNNTFKAYQFYYGS
NRCTNPTYTLIIRGKIRLRQASWIIRGGTEADYQLHNVQVICHTEAVAEKLGQQVNRT
CPGFLADGGPWVQDVAYDLWREENGCECTKAVNFAMHELQLIRVEKQYLHHNLDH
LVEELFLGDIHTDATQRMFYRPSSYQPPLQNAKNHDHACIACRIIYRSDEHHPPILPP
KADLTIGLHGEWVSQRCEVRPEVFLTRHFIFHDNNNTWEGHYHYSDPVCKHPTF
SIYARGRYSRGVLSSRVMGGTEFVFKVNHMKVTPMDAATASLLNVFNGNECGAEG
SWQVGIQQDVHTHTNGCVALGIKLPHTYEYIFKMEQDARGRYLLFNGQRPSDGSSPD
RPEKRATSYQMPLVQCASSPRAEDLAEDSGSSLYGRAPGRHTWSLLLAALACLVP
LLHWNIRRTRTRPLEQKLISEEDLAANDILDYKDDDDKV
```

 Tel: 1-631-559-9269 1-516-512-3133

 Email: info@creative-biomart.com  Fax: 1-631-938-8127

 45-1 Ramsey Road, Shirley, NY 11967, USA

Purity	> 80% as determined by SDS-PAGE and Coomassie blue staining
Stability	Stable for 3 months from receipt of products under proper storage and handling conditions.
Storage	Store at -80 centigrade. Avoid repeated freeze-thaw cycles.
Concentration	50 µg/mL as determined by BCA
Storage Buffer	100 mM glycine, 25 mM Tris-HCl, pH 7.3.

GENE INFORMATION

Gene Name	APCDD1 adenomatosis polyposis coli down-regulated 1 [Homo sapiens (human)]
Official Symbol	APCDD1
Synonyms	APCDD1; adenomatosis polyposis coli down-regulated 1; protein APCDD1; B7323; hypoptrichosis simplex; adenomatosis polyposis coli down-regulated 1 protein; HHS; HTS; DRAPC1; FP7019;
Gene ID	147495
mRNA Refseq	NM_153000
Protein Refseq	NP_694545
MIM	607479
UniProt ID	Q8J025

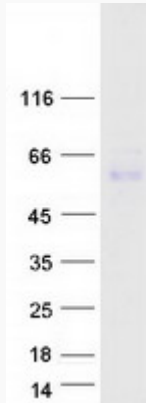
 Tel: 1-631-559-9269 1-516-512-3133

 Email: info@creative-biomart.com  Fax: 1-631-938-8127

 45-1 Ramsey Road, Shirley, NY 11967, USA



SDS-PAGE



☎ Tel: 1-631-559-9269 1-516-512-3133

☎ Email: info@creative-biomart.com ☎ Fax: 1-631-938-8127

☎ 45-1 Ramsey Road, Shirley, NY 11967, USA