

Recombinant Human APCS protein(20-223aa)

Cat. No. APCS-2104H Lot. No. (See product label)

SPECIFICATION

Product Overview	Recombinant Human APCS protein(P02743)(20-223aa), fused with N-terminal His tag, was expressed in E.coli.
Species	Human
Source	E.coli
ProteinLength	20-223 a.a.
Form	If the delivery form is liquid, the default storage buffer is Tris/PBS-based buffer, 5%-50% glycerol. If the delivery form is lyophilized powder, the buffer before lyophilization is Tris/PBS-based buffer, 6% Trehalose, pH 8.0.
Molecular Mass	27.3 kDa
Purity	Greater than 85% as determined by SDS-PAGE.
Storage	Store at -20°C/-80°C upon receipt, aliquoting is necessary for mutiple use. Avoid repeated freeze-thaw cycles.
Reconstitution	We recommend that this vial be briefly centrifuged prior to opening to bring the contents to the bottom. Please reconstitute protein in deionized sterile water to a concentration of 0.1-1.0 mg/mL. We recommend to add 5-50% of glycerol (final concentration) and aliquot for long-term storage at -20°C/-80°C.

 Tel: 1-631-559-9269 1-516-512-3133

 Email: info@creative-biomart.com  Fax: 1-631-938-8127

 45-1 Ramsey Road, Shirley, NY 11967, USA

Full Length	Full L.
AA Sequence	HTDLSGKVFVFPRESVTDHVNLIPTLEKPLQNFTLCFRAYSDLRSAYSLFSYNTQGR DNELLVYKERVGEYSLYIGRHKVTSTKVIKFPAPVHICVSWESSSGIAEFWINGTPLV KKGLRQGYFVEAQPKIVLGQEQDSYGGKFDRSQSFVGEIGDLYMWDSVLPPENILS AYQGTPLPANILDWQALNYEIRGYVIKPLVWV

GENE INFORMATION

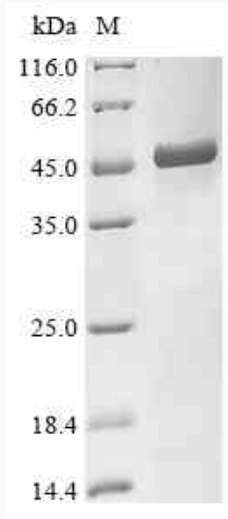
Gene Name	APCS amyloid P component, serum [Homo sapiens]
Official Symbol	APCS
Synonyms	APCS; amyloid P component, serum; serum amyloid P-component; 9.5S alpha 1 glycoprotein; MGC88159; pentaxin related; PTX2; SAP; pentaxin-related; 9.5S alpha-1-glycoprotein;
Gene ID	325
mRNA Refseq	NM_001639
Protein Refseq	NP_001630
MIM	104770
UniProt ID	P02743

 Tel: 1-631-559-9269 1-516-512-3133

 Email: info@creative-biomart.com  Fax: 1-631-938-8127

 45-1 Ramsey Road, Shirley, NY 11967, USA

SDS-PAGE



 Tel: 1-631-559-9269 1-516-512-3133

 Email: info@creative-biomart.com  Fax: 1-631-938-8127

 45-1 Ramsey Road, Shirley, NY 11967, USA