

## Recombinant Human APEG1 protein, GST-tagged

Cat. No. APEG1-675H Lot. No. (See product label)

### SPECIFICATION

<b>Product Overview</b>	Human APEG1 full-length ORF ( AAH06346, 1 a.a. - 113 a.a.) recombinant protein with GST-tag at N-terminal.
<b>Species</b>	Human
<b>Source</b>	Wheat Germ
<b>Description</b>	This gene encodes a protein with similarity to members of the myosin light chain kinase family. This protein family is required for myocyte cytoskeletal development. Along with the desmin gene, expression of this gene may be controlled by the desmin locus control region. Mutations in this gene are associated with centronuclear myopathy 5. [provided by RefSeq, Jun 2016]
<b>Molecular Mass</b>	38.17 kDa
<b>AA Sequence</b>	MKPSPSQNRRSSDTGSKAPPTFKVSLMDQSVREGQDVIMSIRVQGEPKPVVSWLR NRQPVRPDQRRFAEEAEGGLCRLRILAAERGDAGFYTCKAVNEYGARQCEARLEV RGE
<b>Applications</b>	Enzyme-linked Immunoabsorbent Assay; Western Blot (Recombinant protein); Antibody Production; Protein Array
<b>Notes</b>	Best use within three months from the date of receipt of this protein.
<b>Storage</b>	Store at -80 centigrade. Aliquot to avoid repeated freezing and thawing.

 Tel: 1-631-559-9269 1-516-512-3133

 Email: [info@creative-biomart.com](mailto:info@creative-biomart.com)  Fax: 1-631-938-8127

 45-1 Ramsey Road, Shirley, NY 11967, USA

**Storage Buffer** 50 mM Tris-HCl, 10 mM reduced Glutathione, pH=8.0 in the elution buffer.

## GENE INFORMATION

**Gene Name** SPEG SPEG complex locus [ Homo sapiens ]

**Official Symbol** SPEG

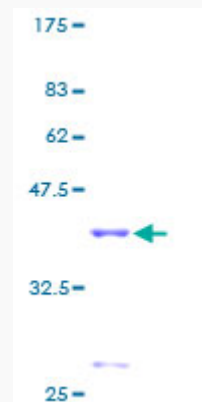
**Synonyms** SPEG; SPEG complex locus; aortic preferentially expressed gene 1 , APEG1; striated muscle preferentially expressed protein kinase; BPEG; KIAA1297; MGC12676; SPEGalpha; SPEGbeta; aortic preferentially expressed gene 1; aortic preferentially expressed protein 1; nuclear protein, marker for differentiated aortic smooth muscle and down-regulated with vascular injury; APEG1; APEG-1;

**Gene ID** 10290

**mRNA Refseq** NM\_001173476

**Protein Refseq** NP\_001166947

**UniProt ID** Q15772



 Tel: 1-631-559-9269 1-516-512-3133

 Email: [info@creative-biomart.com](mailto:info@creative-biomart.com)  Fax: 1-631-938-8127

 45-1 Ramsey Road, Shirley, NY 11967, USA



12.5% SDS-PAGE Stained with Coomassie Blue.

 Tel: 1-631-559-9269 1-516-512-3133

 Email: [info@creative-biomart.com](mailto:info@creative-biomart.com)  Fax: 1-631-938-8127

 45-1 Ramsey Road, Shirley, NY 11967, USA