

## Recombinant Human APEH protein, GST-tagged

**Cat. No.** APEH-676H    **Lot. No.** (See product label)

### SPECIFICATION

|                         |  |
|-------------------------|--|
| <b>Product Overview</b> | Human APEH full-length ORF ( NP_001631.3, 1 a.a. - 732 a.a.) recombinant protein with GST-tag at N-terminal.   |
| <b>Species</b>          | Human  |
| <b>Source</b>           | Wheat Germ   |
| <b>Description</b>      | <p>This gene encodes the enzyme acylpeptide hydrolase, which catalyzes the hydrolysis of the terminal acetylated amino acid preferentially from small acetylated peptides. The acetyl amino acid formed by this hydrolase is further processed to acetate and a free amino acid by an aminoacylase. This gene is located within the same region of chromosome 3 (3p21) as the aminoacylase gene, and deletions at this locus are also associated with a decrease in aminoacylase activity. The acylpeptide hydrolase is a homotetrameric protein of 300 kDa with each subunit consisting of 732 amino acid residues. It can play an important role in destroying oxidatively damaged proteins in living cells. Deletions of this gene locus are found in various types of carcinomas, including small cell lung carcinoma and renal cell carcinoma. [provided by RefSeq, Jul 2008]</p> |
| <b>Molecular Mass</b>   | 107.6 kDa  |
| <b>AA Sequence</b>      | <p>MERQVLLSEPEEAAAALYRGLSRQPALSAACLGPEVTTQYGGQYRTVHTEWTQRDL<br/> ERMENIRFCRQYLVFHDGDSVVFAGPAGNSVETRGELLSRESPSGTMKAVLRKAG<br/> GTGPGEEKQFLEVWEKNRKLKSFNLSALEKHGPVYEDDCFGCLSWSHSETHLLYV</p>  |

 Tel: 1-631-559-9269    1-516-512-3133

 Email: [info@creative-biomart.com](mailto:info@creative-biomart.com)     Fax: 1-631-938-8127

 45-1 Ramsey Road, Shirley, NY 11967, USA

AEKKRPKAESFFQTKALDVSASDDEIARLKKPDQAIKGDQFVYEDWGENMVSKSIP  
 VLCVLDVESGNISVLEGVPEENVSPGQAFWAPGDAGVVFVGVVWHEPFRLGIRFCTN  
 RRSALYYVDLIGGKCELLSDDSLAVSSPRLSPDQCRIVYLQYPSLIPHHQCSQLCLYD  
 WYTKVTSVVVDVVPRQLGENFSGIYCSLLPLGCWSADSQRVVFDSAQRSRQDLFA  
 VDTQVGTVTSLTAGGSGGSWKLLTIDQDLMVAQFSTPSLPPTLKVGFPLPSAGKEQS  
 VLWVSLEEAEPIDIHWGIRVLQPPPEQENVQYAGLDFEAILLQPGSPDPKTQVPMV  
 VMPHGGPHSSFVTAWMLFPAMLCKMGFAVLLVNYRGSTGFGQDSILSLPGNVGHQ  
 DVKDVQFAVEQVLQEEHFDASHVALMGGSHGGFISCHLIGQYPETYRACVARNPVI  
 NIASMLGSTDIPDWCVVEAGFPFSSDCLPDLVWAEMLDKSPIRYIPQVKTPLLLMLG  
 QEDRRVFPKQGMYYRALKTRNVPVRLLLYPKSTHALSEVEVESDSFMNAVLWLRT  
 HLGS

**Applications**

Enzyme-linked Immunoabsorbent Assay; Western Blot (Recombinant protein);  
 Antibody Production; Protein Array

**Notes**

Best use within three months from the date of receipt of this protein.

**Storage**

Store at -80 centigrade. Aliquot to avoid repeated freezing and thawing.

**Storage Buffer**

50 mM Tris-HCl, 10 mM reduced Glutathione, pH=8.0 in the elution buffer.

## GENE INFORMATION

**Gene Name**

[APEH N-acylaminoacyl-peptide hydrolase \[ Homo sapiens \]](#)

**Official Symbol**

[APEH](#)

**Synonyms**

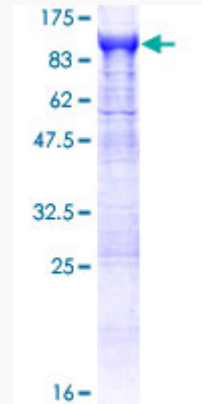
APEH; N-acylaminoacyl-peptide hydrolase; D3F15S2, D3S48E, DNF15S2;  
 acylamino-acid-releasing enzyme; acyl-peptide hydrolase; acylaminoacyl-peptidase;  
 oxidized protein hydrolase; APH; OPH; AARE; ACPH; D3S48E; D3F15S2; DNF15S2;  
 MGC2178;

 Tel: 1-631-559-9269 1-516-512-3133

 Email: [info@creative-biomart.com](mailto:info@creative-biomart.com)  Fax: 1-631-938-8127

 45-1 Ramsey Road, Shirley, NY 11967, USA

|                |           |
|----------------|-----------|
| Gene ID        | 327       |
| mRNA Refseq    | NM_001640 |
| Protein Refseq | NP_001631 |
| MIM            | 102645    |
| UniProt ID     | P13798    |



12.5% SDS-PAGE Stained with Coomassie Blue.

Tel: 1-631-559-9269 1-516-512-3133

Email: [info@creative-biomart.com](mailto:info@creative-biomart.com) Fax: 1-631-938-8127

45-1 Ramsey Road, Shirley, NY 11967, USA