

# Recombinant Full Length Human APEX1 Protein, C-Flag-tagged

**Cat. No.** APEX1-2021HFL    **Lot. No.** (See product label)

## SPECIFICATION

<b>Product Overview</b>	Recombinant Full Length Human APEX1 Protein, fused to Flag-tag at C-terminus, was expressed in Mammalian cells.
<b>Species</b>	Human
<b>Source</b>	Mammalian Cells
<b>Description</b>	The APEX gene encodes the major AP endonuclease in human cells. It encodes the APEX endonuclease, a DNA repair enzyme with apurinic/aprimidinic (AP) activity. Such AP activity sites occur frequently in DNA molecules by spontaneous hydrolysis, by DNA damaging agents or by DNA glycosylases that remove specific abnormal bases. The AP sites are the most frequent pre-mutagenic lesions that can prevent normal DNA replication. Splice variants have been found for this gene; all encode the same protein. Disruptions in the biological functions related to APEX are associated with many various malignancies and neurodegenerative diseases.
<b>Form</b>	25 mM Tris HCl, pH 7.3, 100 mM glycine, 10% glycerol.
<b>Molecular Mass</b>	35.4 kDa
<b>AA Sequence</b>	MPKRGKKGAVAEDGDEL RTEPEAKKSKTAAKKN DKEAAGEGPALYEDPPDQKTSP SGKPATLKICSWNVD GLRAWIKKKGLDWVKEEAPDILCLQETKCSENKLP AELQELP GLSHQYWSAPSDKEGYSGVGLLSRQCPL KVSYGIGDEEHDQEGRVIVAEFDSFVL VTAYVPNAGRGLVRL EYRQRWDEAFRKFLKGLASRKPLVLCGD LNVAHEEIDL RNP

 Tel: 1-631-559-9269    1-516-512-3133

 Email: [info@creative-biomart.com](mailto:info@creative-biomart.com)     Fax: 1-631-938-8127

 45-1 Ramsey Road, Shirley, NY 11967, USA

KGNKKNAGFTPQERQGFCELLQAVPLADSFRLHPNTPYAYTFWTYMMNARSKNV  
 GW RLDYFLLSHSLLPALCDSKIRSKALGSDHCPITLYLAL TRTRPLEQKLISEEDLAA  
 NDILDYKDDDDKV

**Purity** > 80% as determined by SDS-PAGE and Coomassie blue staining.

**Stability** Stable for 12 months from the date of receipt of the product under proper storage and handling conditions. Avoid repeated freeze-thaw cycles.

**Storage** Store at -80 centigrade.

**Concentration** >50 ug/mL as determined by microplate BCA method.

**Preparation** Recombinant protein was captured through anti-DDK affinity column followed by conventional chromatography steps.

**Protein Families** Druggable Genome, Stem cell - Pluripotency, Transcription Factors

**Protein Pathways** Base excision repair

**Full Length** Full L.

## GENE INFORMATION

**Gene Name** [APEX1 apurinic/aprimidinic endodeoxyribonuclease 1 \[ Homo sapiens \(human\) \]](#)

**Official Symbol** [APEX1](#)

**Synonyms** APE; APX; APE1; APEN; APEX; HAP1; REF1

**Gene ID** [328](#)

 Tel: 1-631-559-9269 1-516-512-3133

 Email: [info@creative-biomart.com](mailto:info@creative-biomart.com)  Fax: 1-631-938-8127

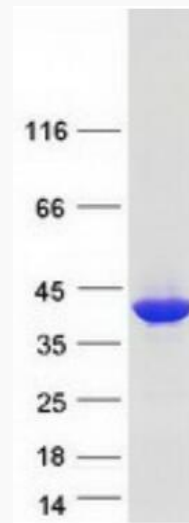
 45-1 Ramsey Road, Shirley, NY 11967, USA

mRNA Refseq [NM\\_080648.3](#)

Protein Refseq [NP\\_542379.1](#)

MIM [107748](#)

UniProt ID [P27695](#)



Coomassie blue staining of purified APEX1 protein.

 Tel: 1-631-559-9269 1-516-512-3133

 Email: [info@creative-biomart.com](mailto:info@creative-biomart.com)  Fax: 1-631-938-8127

 45-1 Ramsey Road, Shirley, NY 11967, USA